

## Declaration of Performance No 040883-RK01

According to the Regulation EU No 305/2011

### RK01

Manufacturer: Tecfi S.p.A. - S.S. Appia, km 193 - 81050 Pastorano (CE), Italia



1 - Intended use	
<b>Product-type:</b>	Fastening screws for sandwich panels
<b>Screw type:</b>	Self-drilling screws for sandwich panels
<b>Technical description of the product:</b>	see Table 2
<b>Specification of the intended use in accordance with the applicable EAD:</b>	The intended use comprises fastening screws and connections for indoor and outdoor applications. Fastening screws which are intended to be used in external environments with < C2 corrosion according to the standard EN ISO 12944-2 are made of stainless steel. Furthermore the intended use comprises connections with predominantly static loads (e.g. wind loads, dead loads). The performances given in Table 4 are only valid if anchor is used in compliance with the specifications and conditions given in the Table 3
<b>Base material:</b>	steel substructures type: S235 - S280GD - S320GD - S350GD
<b>Installation:</b>	see Table 3
<b>Loading:</b>	static and quasi static load
<b>Durability:</b>	The intended use comprises fastening screws and connections for indoor and outdoor applications. External environments with < C2 corrosion according to the standard EN ISO 12944-2. For the corrosion protection the rules given in EN 1993-1-3, EN 1993-1-4 and EN 1999-1-4 shall be taken into account. The provisions made in the relevant European Technical Assessment are based on an assumed working life of the fasteners of 25 years
<b>Resistance to fire:</b>	NPD
<b>Reaction to fire:</b>	The metal parts of fastening screws are considered to satisfy the requirements of performance class A1 of reaction to fire, in accordance with the provisions of the EC Decision 96/603/EC (as amended) without the need for testing on the basis of its listing in that decision.
<b>European Assessment Document:</b>	EAD 330047-01-0602 "Fastening screws for sandwich panels"
<b>European Technical Document:</b>	ETA 18/0713
<b>Technical Assessment Body:</b>	Instytut Techniki Budowlanej
<b>Design methods:</b>	Relevant parts of Eurocode and/or relevant national regulations
<b>Assessment and verification of Constancy of Performance:</b>	No. 1020-CPR-010-040883
<b>Notified Body:</b>	TZUS - Technický a Zkušební Ústav Stavební Praha, s.p.
<b>Under the system:</b>	2+

## Declaration of Performance No 040883-RK01

According to the Regulation EU No 305/2011

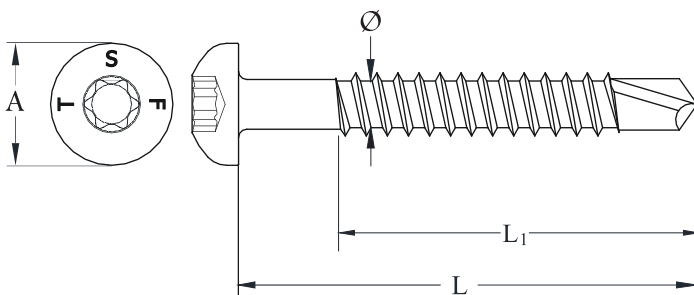
### RK01

Manufacturer: Tecfi S.p.A. - S.S. Appia, km 193 - 81050 Pastorano (CE), Italia



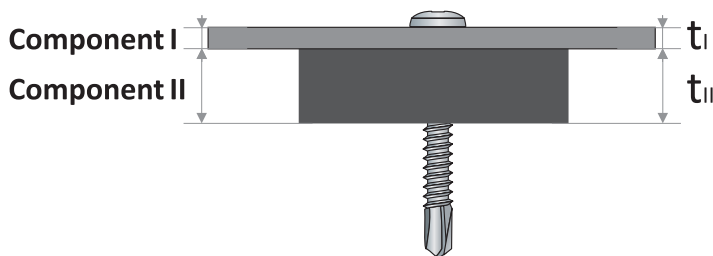
## 2 - Type of screw

Item	Description	Finishing
RK01	Pan head 6-lobe recess self drilling screw, hardened, zinc plated	Zinc plated min. 5 µm, Cr VI Free



$\varnothing$	Outside screw diameter
L	Overall screw length
L1	Threaded plus bit length
A	Wrench size
$N_k$	Characteristic breaking tensile load
$V_k$	Characteristic breaking shear load

## 3 - Installation

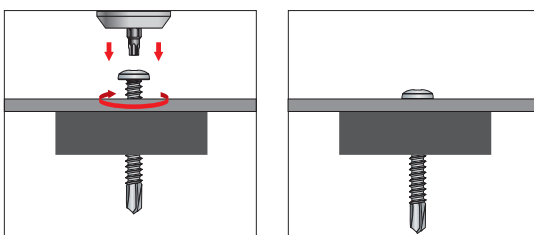


$t_I$	upper element thickness
$t_{II}$	lower element thickness

### 3.1 - Installation data for all lengths of RK01 screws $\varnothing$ 6.3

Maximum drilling capacity	6 mm
Rotational speed of screw under load	1000-1800 [rpm]

### 3.2 - Installation



Installation sequence for accessories  
included in this ETA

## Declaration of Performance No 040883-RK01

According to the Regulation EU No 305/2011

### RK01

Manufacturer: Tecfi S.p.A. - S.S. Appia, km 193 - 81050 Pastorano (CE), Italia



#### 4 - Item code

Item Code	∅ [mm]	L [mm]	L <sub>1</sub> [mm]	t <sub>fix, min</sub> [mm]	t <sub>fix, max</sub> [mm]	A [mm]
RK 01 63 016	6,3	16	Full thread	0,5	2 - t <sub>II</sub>	12,5
RK 01 63 019		19	Full thread	0,5	5 - t <sub>II</sub>	
RK 01 63 022		22	Full thread	0,5	8 - t <sub>II</sub>	
RK 01 63 025		25	Full thread	0,5	11 - t <sub>II</sub>	
RK 01 63 032		32	Full thread	0,5	18 - t <sub>II</sub>	
RK 01 63 038		38	Full thread	0,5	24 - t <sub>II</sub>	
RK 01 63 050		50	Full thread	0,5	36 - t <sub>II</sub>	
RK 01 63 060		60	Full thread	0,5	46 - t <sub>II</sub>	
RK 01 63 070		70	60	15	56 - t <sub>II</sub>	
RK 01 63 080		80	60	25	66 - t <sub>II</sub>	
RK 01 63 100		100	70	35	86 - t <sub>II</sub>	
RK 01 63 120		120	70	55	106 - t <sub>II</sub>	
RK 01 63 140		150	70	75	126 - t <sub>II</sub>	

## Declaration of Performance No 040883-RK01

According to the Regulation EU No 305/2011

### RK01

Manufacturer: Tecfi S.p.A. - S.S. Appia, km 193 - 81050 Pastorano (CE), Italia



#### 5 - Declared performance according to EAD 330047-01-0602 - Screw only

Characteristic loads	$t_{N,1}$ or $t_{N,2}$ (component I)	$t_{II}$ (component II)					
		2	3	4	5	6	7
[kN]	[mm]						
$V_k$	0,4	0,78	0,78	0,78	0,78	0,78	0,78
	0,5	1,19	1,19	1,19	1,19	1,19	1,19
	0,55	1,19	1,19	1,19	1,19	1,19	1,19
	0,63	1,51	1,51	1,51	1,51	1,51	1,51
	0,75	1,76	1,76	1,76	1,76	1,76	1,76
	0,88	1,76	1,76	1,76	1,76	1,76	1,76
	1	1,76	1,76	1,76	1,76	1,76	1,76
	1,13	1,76	1,76	1,76	1,76	1,76	-
	1,25	1,76	1,76	1,76	1,76	1,76	-
	1,5	1,76	1,76	1,76	1,76	1,76	-
$N_k$	0,4	0,36	0,36	0,36	0,36	0,36	0,36
	0,5	0,4	0,4	0,4	0,4	0,4	0,4
	0,55	0,4	0,4	0,4	0,4	0,4	0,4
	0,63	0,68	0,68	0,68	0,68	0,68	0,68
	0,75	0,73	0,73	0,73	0,73	0,73	0,73
	0,88	0,73	0,73	0,73	0,73	0,73	0,73
	1	0,73	0,73	0,73	0,73	0,73	0,73
	1,13	0,73	0,73	0,73	0,73	0,73	-
	1,25	0,73	0,73	0,73	0,73	0,73	-
	1,5	0,73	0,73	0,73	0,73	0,73	-

Max. head displacement	Thickness of sandwich panel	$t_{II}$ (component II)					
		2	3	4	5	6	7
[mm]	[mm]						
$u$	30	0,7	0,7	0,7	0,7	0,7	0,7
	40	0,9	0,9	0,9	0,9	0,9	0,9
	50	1,2	1,2	1,2	1,2	1,2	1,2
	60	1,4	1,4	1,4	1,4	1,4	1,4
	70	1,6	1,6	1,6	1,6	1,6	1,6
	80	1,8	1,8	1,8	1,8	1,8	1,8
	90	2,1	2,1	2,1	2,1	2,1	2,1
	100	2,3	2,3	2,3	2,3	2,3	2,3
	120	2,8	2,8	2,8	2,8	2,8	2,8
	>140	3,2	3,2	3,2	3,2	3,2	3,2

## Declaration of Performance No 040883-RK01

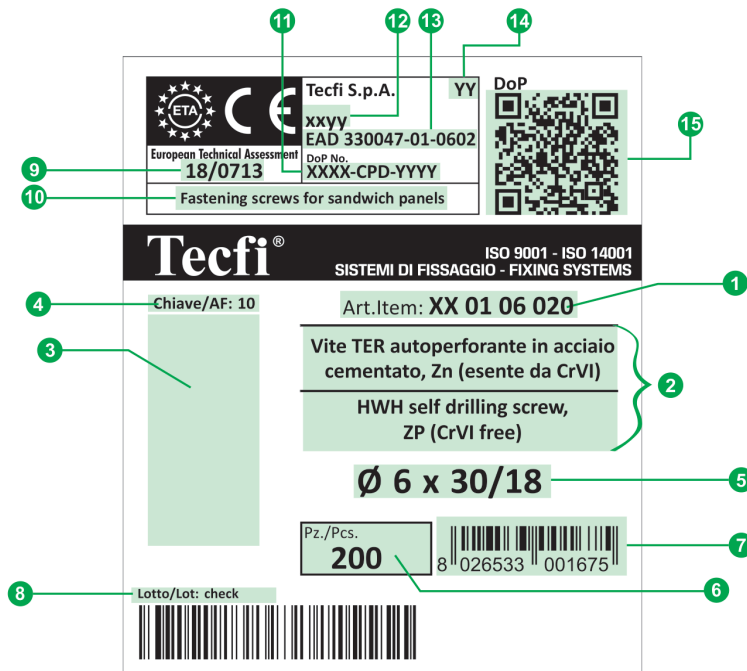
According to the Regulation EU No 305/2011

### RK01

Manufacturer: Tecfi S.p.A. - S.S. Appia, km 193 - 81050 Pastorano (CE), Italia



#### 6 - Label



- |  |  |
|--|--|
| <ul style="list-style-type: none"> <li>1 Codice articolo / Item Code</li> <li>2 Descrizioni / Descriptions</li> <li>3 Immagine / Picture</li> <li>4 Informazione extra / extra information</li> <li>5 Misura / Size</li> <li>6 Numero di pezzi per scatola / Number of Pieces per Box</li> <li>7 Codice EAN 13 / EAN 13 barcode</li> <li>8 Lotto / Lot Number</li> <li>9 Numero di ETA / ETA Number</li> </ul> | <ul style="list-style-type: none"> <li>10 Uso del prodotto previsto dallo standard Europeo applicato, livello di prestazione dichiarato / Intended use of the product as laid down in the European standard applied, level of performance declared</li> <li>11 Numero di DoP / DoP Number</li> <li>12 Gamma di prodotto / Product range</li> <li>13 Specifica tecnica armonizzata / European Technical Specification</li> <li>14 Le ultime due cifre dell'anno in cui il marchio è stato affisso per la prima volta / Last two digits of the year in which the marking was first affixed</li> <li>15 Link al DoP (tramite QR code) / Link to DoP (by QR code)</li> </ul> |
|--|--|

The performance of the product identified above is in conformity with the set of declared performances. This declaration of performance is issued, in accordance with Regulation (EU) No 305/2011, under the sole responsibility of the manufacturer identified above.

Signed for and on behalf of the manufacturer by:

Name and function	Place and date of issue	Signature
President Antonio Guarino	Pastorano, March 29 <sup>th</sup> 2019	