

## Declaration of Performance No 1109-CPD-0082.03

According to the Regulation EU No 305/2011

### SWE01 Sinto ST-EE

Manufacturer: Tecfi S.p.A. - S.S. Appia, km 193 - 81050 Pastorano (CE), Italia



1 - Intended use	
<b>Product-type:</b>	Metal anchor for use in concrete
<b>Anchor type:</b>	Post-installed rebar connections of the sizes 8 to 32 mm with SWE01 Sinto ST-EE injection mortar
<b>Technical description of the product:</b>	The subject of this DoP are the post-installed connections, by anchoring or overlap connection joint consisting of steel reinforcing bars (rebars) in existing structures made of normal weight concrete, using injection mortar SWE01 Sinto ST-EE in accordance with the regulations for reinforced concrete construction. The design of the post-installed rebar connections shall be done in accordance with EN 1992-1-1 (Eurocode 2).
<b>Specification of the intended use in accordance with the applicable EAD:</b>	The assessment of fitness of the anchor for the intended use in relation to the requirements for mechanical resistance and stability and safety in use in the sense of the Basic Requirements 1 and 4 has been made in accordance with the « Guideline for European Technical Approval of Metal Anchors for use in Concrete », Part 1 « Anchors in general » and Part 5 « Bonded anchors », and EOTA Technical Report 023 "Assessment of post-installed rebar connections".
<b>Base material:</b>	The post-installed rebar connections may be used in normal weight concrete of a minimum grade C12/15 and maximum grade C50/60 according to EN 206-1. They may be used in non-carbonated concrete with the allowable chloride content of 0,40 % (Cl 0,40) related to the cement content according to EN 206-1.
<b>Installation:</b>	<ul style="list-style-type: none"> <li>- Dry or wet concrete (use category 1).</li> <li>- It must not be installed in flooded holes.</li> <li>- Overhead installation is permissible.</li> <li>- Hole drilling by hammer drill and diamond drilling machine (dry and wet cutting system).</li> <li>- Installation of the post-installed rebars shall be done only by suitable trained installer and under supervision on the site.</li> <li>- Check the position of the existing rebars (if the position of existing rebars is not known it shall be determined using a rebar detector suitable for this purpose as well as on the basis of the construction documentation and then marked on the building component for the overlap joint).</li> </ul>
<b>Loads:</b>	Static and quasi-static loads
<b>Durability:</b>	<ul style="list-style-type: none"> <li>- Structures subject to dry internal conditions.</li> <li>- Structures subject to external atmospheric exposure including industrial and marine environment).</li> <li>- Structures subject to permanently damp internal conditions if no particular aggressive conditions exist.</li> </ul> <p>Note: Particular aggressive conditions are e.g. permanent, alternating immersion in seawater or the splash zone of seawater, chloride atmosphere of indoor swimming pools or atmosphere with extreme chemical pollution (e.g. in desulphurization plants or road tunnels where de-icing materials are used).</p>
<b>Service temperature:</b>	The anchors may be used in the following temperature range: <b>-40°C to +80°C</b> (max. short term temperature +80°C and max. long term temperature +50°C).
<b>Resistenza al fuoco:</b>	No Performance Declared (NPD).
<b>Reaction to fire:</b>	Once the anchor is installed the thickness of the mortar layer is about 1 or 2 [mm] and most of the mortar is material classified A1 according to EC Decision 96/603/EC. Therefore it may be assumed that the bonding material (synthetic mortar or a mixture of synthetic mortar and cement) in connection with the metal anchor doesn't make any contribution to fire growth and to the smoke hazard.

## Declaration of Performance No 1109-CPD-0082.03

According to the Regulation EU No 305/2011

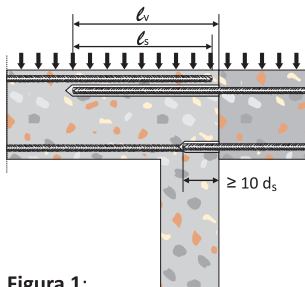
### SWE01 Sinto ST-EE

Manufacturer: Tecfi S.p.A. - S.S. Appia, km 193 - 81050 Pastorano (CE), Italia

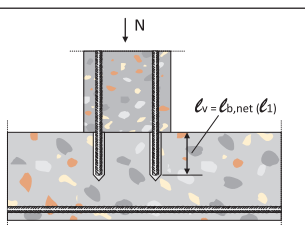


#### 1 - Intended use

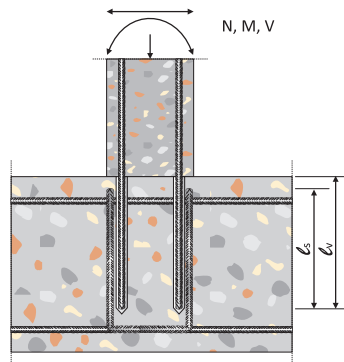
Information referred to in article 31 of Regulation (EC) No 1907/2006 (REACH):	see MSDS
European Assessment Document:	ETAG001, part 1, part 5 and EOTA TR 023
European Technical Assessment:	ETA 12/0254
Technical Assessment Body:	ETA-Danmark A/S, Kollegievej 6, DK-2920 Charlottenlund (Danmark)
Design methods:	<ul style="list-style-type: none"> <li>- Anchorages are designed under the responsibility of an engineer experienced in anchorages and concrete work.</li> <li>- Verifiable calculation notes and drawings are prepared taking into account of the forces to be transmitted.</li> <li>- Design according to EN 1992-1-1.</li> <li>- The actual position of the reinforcement in the existing structure shall be determined.</li> </ul>
Assessment and Verification of Constancy of Performance:	EC Certificate No. 1109-CPD-0082.03
Notified Body:	IFBT GmbH, Hans-Weigel-Straße 2b, D - 04319 Leipzig, (Germany)
Under the system:	1



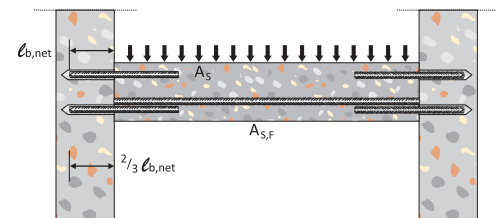
**Figura 1:**  
Overlap joint for rebar connections of slabs and beams



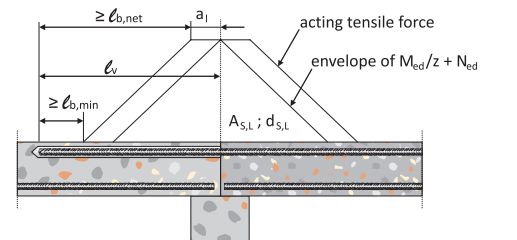
**Figura 4:**  
Rebar connection for components stressed primarily in compression.



**Figura 2:**  
Overlap joint at a foundation of a column or wall where the rebars are stressed in tension



**Figura 3:**  
End anchoring of slabs or beams, designed as simply supported.



**Figura 5:**  
Anchoring of reinforcement to cover the line of acting tensile force

**Note:** In the figures no transverse reinforcement is plotted, the transverse reinforcement as required by EC2 shall be present. The shear transfer between old and new concrete shall be designed according to EC2.

## Declaration of Performance No 1109-CPD-0082.03

According to the Regulation EU No 305/2011

### SWE01 Sinto ST-EE

Manufacturer: Tecfi S.p.A. - S.S. Appia, km 193 - 81050 Pastorano (CE), Italia



## 2 - Anchor's components

### 2.a: Rebars material

Product form		Bars and de-coiled rods	
Class		A	B
Characteristic yield strength $f_{yk}$ or $f_{0,2k}$ [N/mm <sup>2</sup> ]		400 to 600	
Minimum value of $d_i k = (f_t/f_y)_k$		≥1,08	≥1,15 <1,35
Characteristic strain at minimum force, $\epsilon_{uk}$ [%]		≥5,0	≥7,5
Bendability		bend / rebend test	
Maximum deviation from nominal mass (individual bar) [%]	Nominal diameter [mm]	0,040	
	≤Ø8	0,056	
	>Ø8		

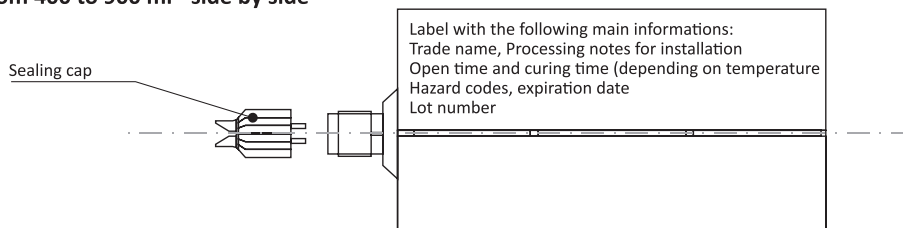
Rib height h: The rib height h should be:  $0,05 \cdot \phi \leq h \leq 0,07 \cdot \phi$

Ø = nominal bar diameter

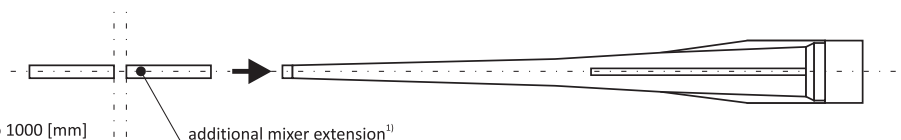
### 2.b: Resin

Resin	Composizione
SWE01 Sinto ST-EE: two componets injection mortar	Additive: quartz Bonding agent: epoxy resin

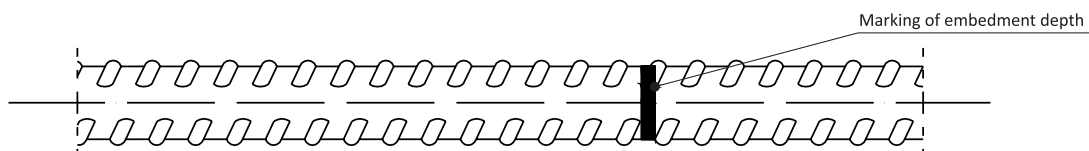
### Cartridge from 400 to 900 ml - side by side



### Mixer – the mixer is suitable for each type of cartridge



### Rebar



## Declaration of Performance No 1109-CPD-0082.03

According to the Regulation EU No 305/2011

### SWE01 Sinto ST-EE

Manufacturer: Tecfi S.p.A. - S.S. Appia, km 193 - 81050 Pastorano (CE), Italia

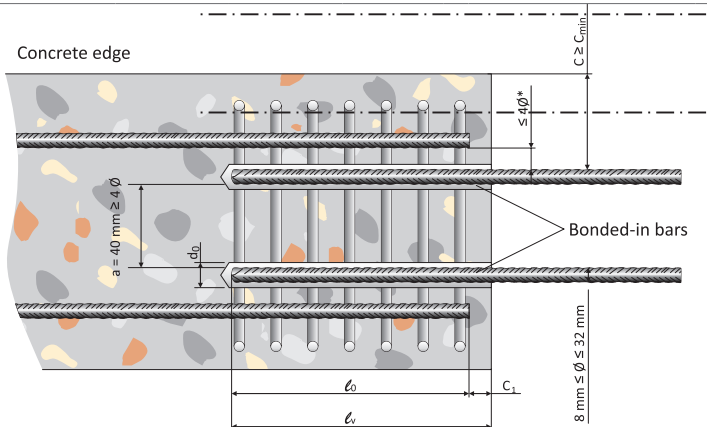


## 3 - Installation

### 3.a: 3.1 Installation information

Only tension forces in the axis of the rebar may be transmitted.

The transfer of shear forces between new concrete and existing structure shall be designed additionally according to EN 1992-1-1.



$\phi$	Rebar diameter
$d_0$	Drill hole diameter
$l_0$	Overlap length (EN 1992-1-1, clause 8.7.3)
$l_v$	Effective anchorage depth; $l_v \geq l_0 + c_1$
$C$	Concrete cover of post-installed rebar
$C_{min}$	Minimum concrete cover (EN 1992-1-1, clause 4.4.1.2)
$C_1$	Concrete cover of the existing rebar
$a^{1)}$	Distance between overlapping rebars

<sup>1)</sup> If the clear distance between overlapping rebars is greater than  $4\phi$  the overlap length shall be enlarged by the difference between the clear distance and  $4\phi$

### 3.b: Installation data <sup>2) 3)</sup>

Diameter	$d_0$	$l_{0,min}$	$l_{b,min}$	$l_{v,max}$	$C_{min}$	$a$
$\phi$	[mm]	[mm]	[mm]	[mm]	[mm]	[mm]
8	12	200	115	700	$30 + 0,06 l_v \geq 2 \phi$	$40 \geq 4 \phi$
10	14	200	145	900		
12	16	200	170	1100		
14	18	210	200	1300		
16	20	240	230	1400		
20	25	300	285	1800		
25	30	375	355	2200	$40 + 0,06 l_v \geq 2 \phi$	
28	35	420	400	2500		
32	40	480	455	2500		

<sup>2)</sup> Valid for hammer drilling and diamond drilling methods

<sup>3)</sup> According to EN 1992-1-1 modified with TR023:  $l_{b,min}$  (8.6) and  $l_{0,min}$  (8.11) with maximum yield stress for rebar BSt 500S,  $\gamma_M = 1,15$ ,  $\alpha_6 = 1,0$ , concrete C20/25 with  $f_{bd} = 2,30 N/mm^2$  and good bond condition.

### 3.c: Minimum curing time <sup>1)</sup>

Concrete temperature [°C]	Processing time	Minimum curing time <sup>3)</sup>
0 <sup>2)</sup>	3 h 20 min	54 h
5 <sup>2)</sup>	2 h 30 min	41 h
10	1 h 40 min	28 h
15	1 h 10 min	22 h
20	50 min	16 h
25 <sup>4)</sup>	30 min	14 h
30 <sup>4)</sup>	20 min	12 h

<sup>1)</sup> The minimum time from the end of the mixing to the time when the anchor may be torque or loaded

<sup>2)</sup> The minimum recommended resin temperature is 10[°C]

<sup>3)</sup> The minimum curing time for dry, wet and flooded hole conditions

<sup>4)</sup> Maximum resin temperature 24 °C.

## Declaration of Performance No 1109-CPD-0082.03

According to the Regulation EU No 305/2011

### SWE01 Sinto ST-EE

Manufacturer: Tecfi S.p.A. - S.S. Appia, km 193 - 81050 Pastorano (CE), Italia



## 3 - Installation

### 3.d: procedure up to 300 [mm] embedment depth

<p>1</p>	<p>Drill the hole with the correct diameter and depth using a rotary percussive machine.</p>
<p>2</p>	<p>Clean the hole from drilling dust: the hole shall be cleaned by at least 4 blowing operations, by at least 4 brushing operations followed again by at least 4 blowing operations; before brushing, clean the brush and check if the brush diameter is sufficient.</p>
<p>3</p>	<p>Unscrew the front cap of the cartridge, screw in the mixer and insert the cartridge in the extruder. Before starting to use the cartridge, eject a first part of the product, being sure that the two components are completely mixed. The complete mixing is reached only after that the product, obtained by the mixing of the two components, comes out from the mixer with a uniform color.</p>
<p>4</p>	<p>Fill the drill hole uniformly starting from the bottom, in order to avoid entrapment of the air; remove the mixer slowly during the extrusion. Fill the drill hole with a quantity of injection mortar corresponding to 2/3 of the drill hole depth. Insert immediately the rod, marked according to the proper anchorage depth, slowly and with a slight twisting motion, removing excess of injection mortar around the rod. Observe the processing and the curing time before torque or load the anchor. (the rod must be free from oil or other contaminations)</p>

## Declaration of Performance No 1109-CPD-0082.03

According to the Regulation EU No 305/2011

### SWE01 Sinto ST-EE

Manufacturer: Tecfi S.p.A. - S.S. Appia, km 193 - 81050 Pastorano (CE), Italia



## 3 - Installation

### 3.e: Installation procedure up to 600 [mm] embedment depth

<p>1</p>	<p>Drill the hole with the correct diameter and depth using a rotary percussive machine.</p>
<p>2</p>	<p>Clean the hole from drilling dust: the hole shall be cleaned by at least 4 blowing operations, by at least 4 brushing operations followed again by at least 4 brushing operations; before brushing, clean the brush and check if the brush diameter is sufficient.</p>
<p>3</p>	<p>Unscrew the front cap of the cartridge, screw in the mixer and insert the cartridge in the proper pneumatic-pump. Before starting to use the cartridge, eject a first part of the product, being sure that the two components are completely mixed. The complete mixing is reached only after that the product, obtained by the mixing of the two components, comes out from the mixer with an uniform color.</p>
<p>4</p>	<p>Before starting the injection insert the mixer extension and the injection plug (see paragraph 3.3.2.2).</p>
<p>5</p>	<p>Fill the drill hole uniformly starting from the bottom, in order to avoid entrapment of the air; remove the mixer slowly during the extrusion. Fill the drill hole with a quantity of injection mortar corresponding to 2/3 of the drill hole depth. Insert immediately the rod, marked according to the proper anchorage depth, slowly and with a slight twisting motion, removing excess of injection mortar around the rod. Observe the processing and the curing time before torque or load the anchor (the rod must be free from oil or other contaminations)</p>

## Declaration of Performance No 1109-CPD-0082.03

According to the Regulation EU No 305/2011

### SWE01 Sinto ST-EE

Manufacturer: Tecfi S.p.A. - S.S. Appia, km 193 - 81050 Pastorano (CE), Italia



## 3 - Installation

### 3.f: Installation procedure for diamond drilling method

1		<p>Drill the hole with the correct diameter and depth using a core drill machine. Check the perpendicularity of the hole during the drilling operation. Remove completely the core from the hole.</p> <p>After operation 1, if the diamond drilling machine used has a dry cutting system to proceed with the installation procedure according to point 2. Instead if it is used a wet cutting system before of the point 2 the following operations must be done:</p> <ul style="list-style-type: none"> <li>- Flush the hole 2 times by inserting a water hose to the back of the hole until water runs clear</li> <li>- Brush 2 times with the proper special brush. Before brushing clean the brush and check if the brush diameter is sufficient.</li> <li>- Flush again 2 times until water runs clear</li> <li>- Remove all standing water completely (using for example vacuum system or compressed air free oil)</li> </ul>
2		<p>Clean the hole from drilling dust: the hole shall be cleaned by at least 4 blowing operations (5 seconds for single operation) with compressed air, by at least 4 brushing operations with special brush followed again by at least 4 blowing operations (5 seconds for single operation) with compressed air. Before brushing clean the brush and check if the brush diameter is sufficient.</p> <p>After the operation above, to follow the operations from 3 to 6 on the previous Annex B9 and B10 in function of the depth of the hole.</p>

## 3 - Installation

### 3.g: Overhead application

1		<p>Start injection: Inject from the bottom of the hole using the proper pneumatic-pump. Hold this position during the injection phase.</p>
2		<p>Injection phase: inject the product about 2/3 of the hole depth. During the injection hold this position to assure the correct installation.</p>
3		<p>End injection: remove the injection plug. Insert immediately the rod (turn the rod during the insertion).</p>
4		<p>End installation: to avoid the slipping of the rod during the open time of the product (due to the rod own weight) use a temporary interlocking element (e.g. wedge of wood).</p>

## Declaration of Performance No 1109-CPD-0082.03

According to the Regulation EU No 305/2011

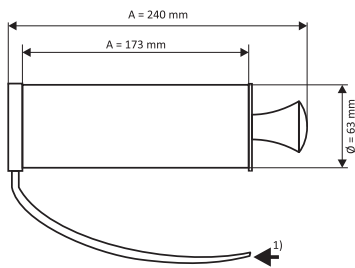
### SWE01 Sinto ST-EE

Manufacturer: Tecfi S.p.A. - S.S. Appia, km 193 - 81050 Pastorano (CE), Italia



## 3 - Installation

### 3.2: Cleaning tools



Manual blower pump  
(It's possible to use the mixer extension with the manual blower pump)



Mechanical air system (compressed air)  
The use of the mixer extension is also allowed if using the compressor (compressed air)

- Minimum suitable pressure 6 [bar] at 6 [m3/h].
- Oil free compressed air.
- Recommended air gun with an orifice opening minimum 3,5 [mm] in diameter.

1) Position to insert the mixer extension<sup>2)</sup>

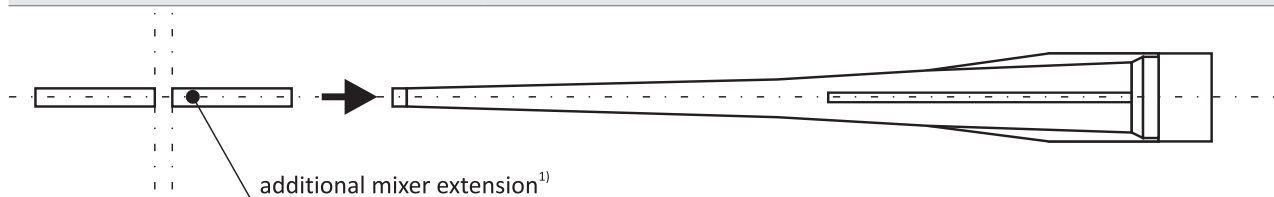
2) Mixer extension (from 380 [mm] to 1000 [mm]) with nominal diameter equal to 8 [mm]

#### 3.3.1 Tools for injection:

Installation procedure up to 300 [mm] embedment depth (no overhead installation)

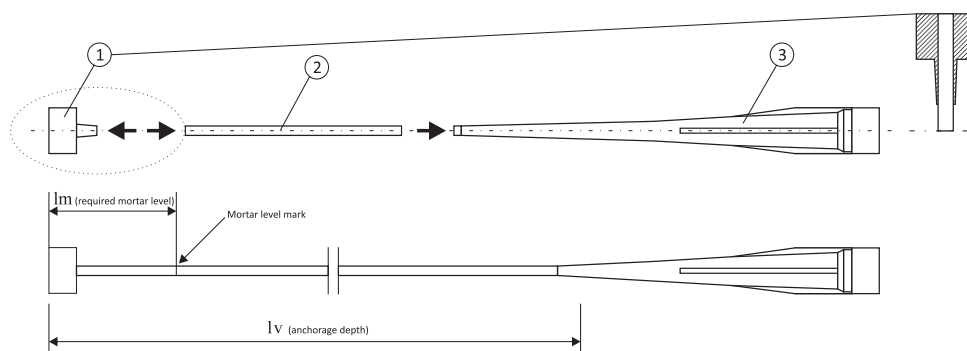
#### 3.3.2 Special installation conditions:

3.3.2.1 Use the mixer extension (assembled on the standard mixer) in the installation procedure up to 300 [mm] embedment depth if needed



1) Variable length from 380 [mm] to 1000 [mm]

3.3.2.2 Use the mixer extension (assembled on the standard mixer) with the injection plug for installation procedure up to 600 [mm] and overhead installations



1 Injection plug (nominal diameter according to the nominal diameter of the drill hole)

2 Special mixer extension (variable length, with nominal diameter 10 [mm]) Mark the required mortar level  $I_m$  and embedment depth  $I_v$  with tape or marker on the injection extension. Quick estimation  $I_m = 1/3 I_v$ . Continue the injection until the mortar level mark  $I_m$  become visible.

3 Standard mixer (suitable for all cartridges size)



## Declaration of Performance No 1109-CPD-0082.03

According to the Regulation EU No 305/2011

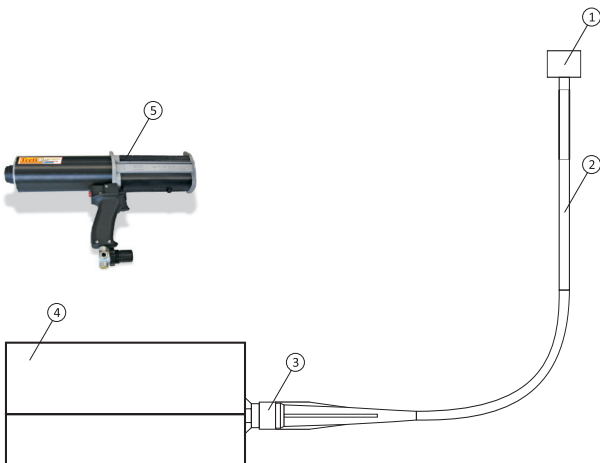
### SWE01 Sinto ST-EE

Manufacturer: Tecfi S.p.A. - S.S. Appia, km 193 - 81050 Pastorano (CE), Italia



### 3 - Installation

#### System assembled



- 1 Injection plug
- 2 Special mixer extension
- 3 Standard mixer
- 4 Cartridge
- 5 Injection pneumatic pump

#### 3.1: Resin injection pump details

Pump example	Cartridge size	Type
DHP 01 00 900 	900 ml	Pneumatic <sup>1)</sup>
DHP 01 00 400 	400 ml	Pneumatic <sup>1)</sup>
DH 03 00 400 	400 ml	Pneumatic <sup>1)</sup>
DH 04 00 400 	400 ml	Manual (up to 300 [mm] embedment depth)

<sup>1)</sup> The pneumatic injection pump is recommended for all special applications

## Declaration of Performance No 1109-CPD-0082.03

According to the Regulation EU No 305/2011

### SWE01 Sinto ST-EE

Manufacturer: Tecfi S.p.A. - S.S. Appia, km 193 - 81050 Pastorano (CE), Italia



## 4 - Declared performance according to ETAG 001 part 1, part 5 and EOTA TR023

### 4.a: Design values of the ultimate bond resistance $f_{bd}$ [N/mm<sup>2</sup>] according to EN 1992-1-1, Hammer drilling method

Concrete strength class	C12/15	C16/20	C20/25	C25/30	C30/37	C35/45	C40/50	C45/55	C50/60
rebar from $\varnothing 8$ a $\varnothing 28$	1,60	2,00	2,30	2,70	3,00	3,40	3,70	4,00	4,30
rebar $\varnothing 32$	1,60	2,00	2,30	2,70	3,00	3,40	3,70	4,00	4,00

### 4.b Design values of the ultimate bond resistance $f_{bd}$ [N/mm<sup>2</sup>] according to EN 1992-1-1, Diamond drilling method

Concrete strength class	C12/15	C16/20	C20/25	C25/30	C30/37	C35/45	C40/50	C45/55	C50/60
rebar from $\varnothing 8$ a $\varnothing 28$	1,60	2,00	2,30	2,70	3,00	3,40	3,70	4,00	4,30
rebar $\varnothing 28$	1,60	2,00	2,30	2,70	3,00	3,40	3,70	3,70	3,70
rebar $\varnothing 32$	1,60	2,00	2,30	2,70	3,00	3,00	3,00	3,00	3,00

The above values are valid only for good bond conditions according to EN 1992-1-1. For other bond conditions multiply the values by 0,7.

## 5 - Item codes

Cartridge capacity	Cartridge type	Item codes
470 ml	Side by side (shuttle)	<b>SWE 01 00 470</b>
900 ml	Side by side (shuttle)	<b>SWE 01 00 900</b>

**Declaration of Performance No 1109-CPD-0082.03**

According to the Regulation EU No 305/2011

**SWE01 Sinto ST-EE**

Manufacturer: Tecfi S.p.A. - S.S. Appia, km 193 - 81050 Pastorano (CE), Italia



**6 - Label**

**Tecfi** certezze per lavorare bene  
Sistemi di Fissaggio  
ISO 9001 ISO 14001

**SWE 01 SINTO-ST**

**RESINA EPOSSIDICA PURA**

**SEISMIC FIXING SEISMIC FINING - PERFORMANCE CATEGORY B2**

• Pure Epoxy Resin  
• Résine Epoxy Pure  
• Resinas Epoxidharz  
• Resina Epoxi Pura

ETA 12/0253  
CE 1020  
Tecfi S.p.A. 12  
SWE01 - Sinto ST-EE  
ETAG001 part 1, part 5 and ANNEX E  
DoP No. 1020-CPR-000-044214

ETA 12/0254  
CE 1020  
Tecfi S.p.A. 12  
SWE01 - Sinto ST-EE  
ETAG001 part 1, part 5 and ANNEX E  
DoP No. 1020-CPR-000-044214

1 Item Code / Codice articolo  
2 Descriptions / Descrizioni  
3 Cartridge capacity (ml) / Capacità cartuccia (ml)  
4 EAN 13 code / Codice EAN 13  
5 Installation sequence / Sequenza di installazione  
6 Expiring date / Scadenza  
7 Lot Number / Lotto  
8 Warnings / Avvertenze  
9 Danger symbols / Simboli di pericolo  
10 Identification number of the Notified Body / Numero identificativo dell'organismo notificato  
11 Last two digits of the year in which the marking was first affixed / Le ultime due cifre dell'anno in cui il marchio è stato affisso per la prima volta  
12 European standard applied and intended use / Standard europeo applicato ed uso previsto  
13 DoP number / Numero di DoP  
14 Link to DoP / Link al DoP  
15 European Assessment Document's number / Numero del Documento di Valutazione Europea

The performance of the product identified above is in conformity with the set of declared performances. This declaration of performance is issued, in accordance with Regulation (EU) No 305/2011, under the sole responsibility of the manufacturer identified above.

Firmato a nome e per conto di:

<b>Name and function</b> President Antonio Guarino	<b>Place and date of issue</b> Pastorano, July 22 <sup>th</sup> 2019	<b>Signature</b> 
----------------------------------------------------------	-------------------------------------------------------------------------	----------------------