

	 Dome head rivets Aluminium / Zinc plated	<ul style="list-style-type: none"> <li> Rivets tête bombée Aluminium / Zingué</li> <li> Flachrundkopf Blindnieten aus Aluminium / verzinkt</li> <li> Remaches aluminio / acero, cabeza alomada</li> <li> Заклепки алюминий / сталь</li> </ul>	<b>348</b>
	 Large dome head rivets Aluminium / Zinc plated	<ul style="list-style-type: none"> <li> Rivets tête bombée large Aluminium / Zingué</li> <li> Breit-Flachrundkopf Blindnieten aus Aluminium / verzinkt</li> <li> Remache aluminio / acero, cabeza ancha</li> <li> Заклепки с расширенным головкой алюминий / сталь</li> </ul>	<b>350</b>
	 Open end blind folding rivet with gasket, dome head	<ul style="list-style-type: none"> <li> Rivet pliant aveugle à extrémité ouverte avec joint</li> <li> Blindniete mit Flachrundkopf mit Rundscheibe und Nagel</li> <li> Remache cabeza alomada, con junta, con vástago</li> <li> Заклепка с открытым концом, глухая, с прокладкой, куполообразной головкой</li> </ul>	<b>351</b>
	 Dome head rivets Painted aluminium / Zinc plated	<ul style="list-style-type: none"> <li> Rivets tête bombée laqués Aluminium / Zingué</li> <li> Flachrundkopf Blindnieten Aluminium lackiert/ verzinkt</li> <li> Remaches aluminio barnizado / acero, cabeza alomada</li> <li> Заклепки из окрашенного алюминия / сталь</li> </ul>	<b>352</b>
	 Dome head "peel type" rivets Painted aluminium / Zinc plated	<ul style="list-style-type: none"> <li> Rivets fleurs (type peel) tête bombée laqués Aluminium / Zingué</li> <li> Flachrundkopf Spreitzblindnieten Aluminium lackiert/ verzinkt</li> <li> Remache flor aluminio barnizado / acero, cabeza alomada</li> <li> Лепестковые заклепки окрашенные алюминий / сталь</li> </ul>	<b>359</b>
	 Dome head rivets Anodized Copper / Zinc plated	<ul style="list-style-type: none"> <li> Dôme tête rivets Cuivre anodisé / zingué</li> <li> Dome Kopf Nieten Eloxiertes Kupfer / verzinkt</li> <li> Anodizado cobre / acero, cabeza alomada</li> <li> Заклепки анодированный из меди / сталь</li> </ul>	<b>360</b>
	 Dome head rivets Copper / Zinc plated	<ul style="list-style-type: none"> <li> Rivets tête bombée cuivre / zingué</li> <li> Flachrundkopf Blindnieten Kupfer / verzinkt</li> <li> Remaches cobre / acero, cabeza alomada</li> <li> Заклепки из меди / сталь</li> </ul>	<b>361</b>
	 Dome head rivets A2 Stainless steel / Stainless steel	<ul style="list-style-type: none"> <li> Rivets tête bombée Acier inoxydable A2 / Acier inoxydable</li> <li> Flachrundkopf Blindnieten A2 Edelstahl/ Edelstahl</li> <li> Remaches acero inoxidable, cabeza alomada</li> <li> Заклепки из нержавеющей стали A2 (AISI 304)</li> </ul>	<b>362</b>
	 Dome head rivets Zinc plated / Zinc plated	<ul style="list-style-type: none"> <li> Rivets à tête bombée zinguée / zinguée</li> <li> Flachrundkopf Blindnieten verzinkt/ verzinkt</li> <li> Remaches acero / acero, cabeza alomada</li> <li> Заклепки из сталь / сталь</li> </ul>	<b>363</b>
	 Countersunk head rivets Aluminium / Zinc plated	<ul style="list-style-type: none"> <li> Rivets tête fraisée Aluminium / Zingué</li> <li> Senkkopf Blindnieten Aluminium lackiert/ verzinkt</li> <li> Remaches aluminio / acero, cabeza avellanada</li> <li> Зклепки из алюминия с потайной буртик / сталь</li> </ul>	<b>364</b>
	 Hand riveters	<ul style="list-style-type: none"> <li> Riveteuses à main</li> <li> Handblindnietenwerkzeuge</li> <li> Remachadoras manuales</li> <li> Заклепочник ручной</li> </ul>	<b>366</b>
	 High performance hand riveters	<ul style="list-style-type: none"> <li> Riveteuses à main haute performance</li> <li> Hochleistungs- Handblindnietenwerkzeuge</li> <li> Remachadoras manuales profesionales</li> <li> Силовой двуручный стальной заклепочник</li> </ul>	<b>367</b>
	 Rivet nuts	<ul style="list-style-type: none"> <li> Rivets-écrous</li> <li> Blindnieten Gewindeeinsätze</li> <li> Tuercas remachables</li> <li> Резьбовая заклепка-гайка</li> </ul>	<b>368</b>
	 High performance hand riveters for rivet nut	<ul style="list-style-type: none"> <li> Riveteuses à main haute performance pour rivet-écrou</li> <li> Hochleistungs- Handblindnietenwerkzeuge für Gewindeeinsätze</li> <li> Remachadoras manuales profesionales para tuercas remachables</li> <li> Профессиональный заклепочный инструмент для резьбовых заклепок</li> </ul>	<b>369</b>

## Rivets

-  Rivets
-  Nietnagel
-  Remaches
-  Заклепки

# RA 00

EN ISO 15977 - Aluminium alloy (Mg 5%)\* open end blind rivet, dome head, with zinc plated steel break pull mandrel

EN ISO 15977 - Rivet aveugle à corps ouvert en aluminium (Mg 5%)\*, tête bombée, avec clou en acier zingué

EN ISO 15977 - Blindniete Flachrundkopf aus Aluminium (Mg 5%)\*, mit Nagel aus verzinktem Stahl

EN ISO 15977 - Remache de aluminio (Mg 5%)\*, cabeza alomada, con vástago de acero cincado

EN ISO 15977 - Вытяжная заклепка из алюминия (Mg 5%)\*, с полукруглым/стандартным бортиком, стержень из оцинкованной стали

**RA 00** Aluminium alloy body - zinc plated steel mandrel

Corps en aluminium naturel - clou en acier

Körper aus Aluminium - Nagel aus Stahl

Cuerpo aluminio natural - vástago acero

Тела: алюминий - стержень: сталь



Item code	Size Ød x l (mm)	Thickness of fixture t <sub>fix</sub> min-max (mm)	Head diameter Ødk (mm)	Drill hole Ødh1 (mm)	Pcs. per box	Pcs. per carton
Ød: 2,4 mm						
RA 00 24 006	2,4 x 6	2 - 4	5	2,5	1.000	20.000
RA 00 24 008	2,4 x 8	4 - 6			1.000	20.000
RA 00 24 010	2,4 x 10	6 - 8			1.000	20.000
RA 00 24 012	2,4 x 12	8 - 9,5			1.000	20.000
Ød: 3 mm						
RA 00 30 006	3,0 x 6	1,5 - 3,5	6	3,1	1.000	20.000
RA 00 30 008	3,0 x 8	3,5 - 5			1.000	20.000
RA 00 30 010	3,0 x 10	5 - 7			1.000	20.000
RA 00 30 012	3,0 x 12	7 - 9			1.000	20.000
RA 00 30 016	3,0 x 16	9 - 13			1.000	10.000
RA 00 30 020	3,0 x 20	13 - 17			500	10.000
Ød: 3,2 mm						
RA 00 32 006	3,2 x 6	1,5 - 3,5	6,5	3,3	1.000	20.000
RA 00 32 008	3,2 x 8	3,5 - 5			1.000	20.000
RA 00 32 010	3,2 x 10	5 - 7			1.000	20.000
RA 00 32 012	3,2 x 12	7 - 9			1.000	20.000
RA 00 32 016	3,2 x 16	9 - 13			1.000	10.000
RA 00 32 020	3,2 x 20	13 - 17			500	10.000
Ød: 3,4 mm						
RA 00 34 006	3,4 x 6	1,5 - 3,5	6,5	3,5	1.000	20.000
RA 00 34 008	3,4 x 8	3,5 - 5			1.000	20.000
RA 00 34 010	3,4 x 10	5 - 7			1.000	20.000
RA 00 34 012	3,4 x 12	7 - 9			1.000	20.000
RA 00 34 016	3,4 x 16	9 - 13			1.000	10.000
RA 00 34 020	3,4 x 20	13 - 17			500	10.000
Ød: 4 mm						
RA 00 40 006	4 x 6	1 - 3	8	4,1	1.000	10.000
RA 00 40 008	4 x 8	3 - 5			1.000	10.000
RA 00 40 010	4 x 10	5 - 6,5			1.000	10.000
RA 00 40 012	4 x 12	6,5 - 8,5			1.000	10.000
RA 00 40 016	4 x 16	8,5 - 12,5			500	10.000
RA 00 40 020	4 x 20	12,5 - 16,5			500	10.000
RA 00 40 025	4 x 25	16,5 - 21			500	5.000
RA 00 40 030	4 x 30	21 - 26			250	5.000
Ød: 4,8 mm						
RA 00 48 006	4,8 x 6	1,5 - 2,5	9,5	5	500	5.000
RA 00 48 008	4,8 x 8	2,5 - 4			500	5.000
RA 00 48 010	4,8 x 10	4 - 6			500	5.000
RA 00 48 012	4,8 x 12	6 - 8			500	5.000
RA 00 48 016	4,8 x 16	8 - 12			500	5.000
RA 00 48 020	4,8 x 20	12 - 15			500	5.000
RA 00 48 025	4,8 x 25	15 - 20			250	5.000
RA 00 48 030	4,8 x 30	20 - 25			250	2.500
RA 00 48 035	4,8 x 35	25 - 30			200	2.000
RA 00 48 040	4,8 x 40	30 - 35			150	1.500

Size not included in the standard EN ISO 15977

>>>

# RA 00

EN ISO 15977 - Aluminium alloy (Mg 5%)\* open end blind rivet, dome head, with zinc plated steel break pull mandrel

EN ISO 15977 - Rivet aveugle à corps ouvert en aluminium (Mg 5%)\*, tête bombée, avec clou en acier zingué

EN ISO 15977 - Blindniete Flachrundkopf aus Aluminium (Mg 5%)\*, mit Nagel aus verzinktem Stahl

EN ISO 15977 - Remache de aluminio (Mg 5%)\*, cabeza alomada, con vástago de acero cincado

EN ISO 15977 - Вытяжная заклепка из алюминия (Mg 5%)\*, с полукруглым/стандартным бортиком, стержень из оцинкованной стали

**RA 00** Aluminium alloy body - zinc plated steel mandrel

Corps en aluminium naturel - clou en acier

Körper aus Aluminium - Nagel aus Stahl

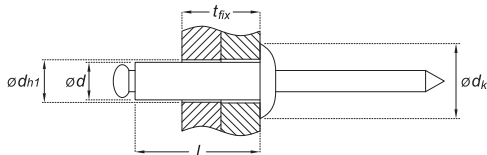
Cuerpo aluminio natural - vástago acero

Тела: алюминий - стержень: сталь

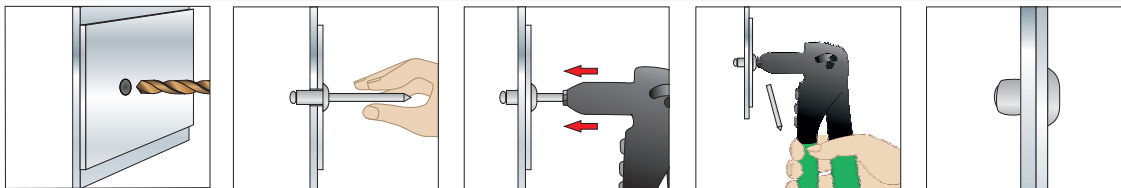


Item code	Size $\varnothing d \times l$ (mm)	Thickness of fixture $t_{fix}$ min-max (mm)	Head diameter $\varnothing dk$ (mm)	Drill hole $\varnothing dh1$ (mm)	Pcs. per box	Pcs. per carton
<b><math>\varnothing d</math>: 6 mm</b>						
RA 00 60 008	6 x 8	2 - 3	12	6,1	400	4.000
RA 00 60 010	6 x 10	3 - 5			400	4.000
RA 00 60 012	6 x 12	5 - 7			400	4.000
RA 00 60 016	6 x 16	7 - 11			350	3.500
RA 00 60 020	6 x 20	11 - 15			250	2.500
RA 00 60 025	6 x 25	15 - 20			250	2.500
RA 00 60 030	6 x 30	20 - 25			200	2.000
RA 00 60 035	6 x 35	25 - 30			200	2.000
<b><math>\varnothing d</math>: 6,4 mm</b>						
RA 00 64 008	6,4 x 8	0,5 - 2	13	6,5	400	4.000
RA 00 64 010	6,4 x 10	2 - 3			400	4.000
RA 00 64 012	6,4 x 12	3 - 6			400	4.000
RA 00 64 016	6,4 x 16	6 - 10			350	3.500
RA 00 64 020	6,4 x 20	10 - 14			250	2.500
RA 00 64 025	6,4 x 25	14 - 18			250	2.500
RA 00 64 030	6,4 x 30	18 - 23			200	2.000
RA 00 64 035	6,4 x 35	23 - 29			200	2.000

Technical Data Sheet



Installation sequence / Instructions de mise en oeuvre / Setzanweisung / Secuencia de instalación / Порядок монтажа



Box / Boîte / Verpackung / Caja / Упаковка



For joining two or more components in tinsmithery/roofings, windows, industrial usages,...

\*: Mg 3,5% until stockout, then Mg 5%

# RB

## Aluminium alloy (Mg 3,5%) open end blind rivet, large dome head, with zinc plated steel break pull mandrel

Rivet aveugle à corps ouvert en aluminium (Mg 3,5%) laqué, tête bombée large, avec clou en acier zingué

Blindniete breiter Flachrundkopf aus Aluminium (Mg 3,5%), mit Nagel aus verzinktem Stahl

Remache de aluminio (Mg 3,5%), cabeza ancha, con vástago de acero cincado

Вытяжная заклепка из окрашенного алюминия (Mg 3,5%), с полукруглым/стандартным бортиком, стержень из оцинкованной стали

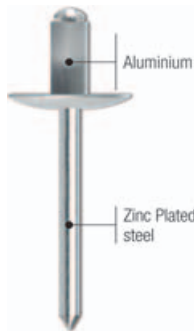
## Aluminium alloy body / zinc plated steel mandrel

Corps en aluminium naturel / clou en acier

Körper aus lackiertem Aluminium / Nagel aus Stahl

Cuerpo aluminio natural / vástago acero

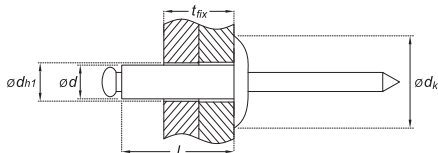
тела: алюминий / стержень: сталь



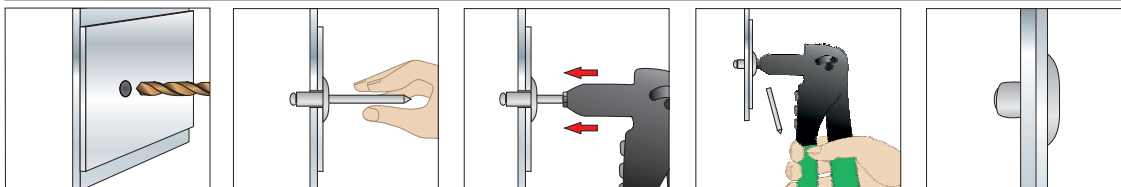
inBlister®  
498

Item code	Size $\varnothing d \times l$ (mm)	Thickness of fixture $t_{fix}$ min-max (mm)	Head diameter $\varnothing d_k$ (mm)	Drill hole $\varnothing dh1$ (mm)	Pcs. per box	Pcs. per carton
<b><math>\varnothing d: 4 \text{ mm} - \varnothing dk: 10 \text{ mm}</math></b>						
RB 10 40 008	4 x 8	3 - 5	10	4,1	500	5.000
RB 10 40 010	4 x 10	5 - 6,5			500	5.000
RB 10 40 012	4 x 12	6,5 - 8,5			500	5.000
RB 10 40 016	4 x 16	8,5 - 12,5			500	5.000
<b><math>\varnothing d: 4 \text{ mm} - \varnothing dk: 12 \text{ mm}</math></b>						
RB 12 40 008	4 x 8	3 - 5	12	4,1	500	10.000
RB 12 40 010	4 x 10	5 - 6,5			500	5.000
RB 12 40 012	4 x 12	6,5 - 8,5			500	5.000
RB 12 40 016	4 x 16	8,5 - 12,5			500	5.000
RB 12 40 020	4 x 20	12,5 - 16 - 5			250	5.000
<b><math>\varnothing d: 4,8 \text{ mm} - \varnothing dk: 14 \text{ mm}</math></b>						
RB 14 48 008	4,8 x 8	2,5 - 4	14	5	500	5.000
RB 14 48 010	4,8 x 10	4 - 6			500	5.000
RB 14 48 012	4,8 x 12	6 - 8			500	5.000
RB 14 48 016	4,8 x 16	8 - 12			250	5.000
RB 14 48 020	4,8 x 20	12 - 15			250	2.500
RB 14 48 025	4,8 x 25	15 - 20			250	2.500
RB 14 48 030	4,8 x 30	20 - 25			200	2.000
<b><math>\varnothing d: 4,8 \text{ mm} - \varnothing dk: 16 \text{ mm}</math></b>						
RB 16 48 010	4,8 x 10	4 - 6	16	5	250	5.000
RB 16 48 012	4,8 x 12	6 - 8			250	5.000
RB 16 48 016	4,8 x 16	8 - 12			250	2.500
RB 16 48 020	4,8 x 20	12 - 15			250	2.500
RB 16 48 025	4,8 x 25	15 - 20			200	2.000
RB 16 48 030	4,8 x 30	20 - 25			200	2.000

Technical  
Data Sheet



Installation sequence / Instructions de mise en oeuvre / Setzanweisung / Secuencia de instalación / Порядок монтажа



Box / Boîte / Verpackung / Caja / Упаковка



For joining two or more components in tinsmithery/roofings, windows, industrial usages,...

# XU - XUL <sup>NEW</sup>

- 🇬🇧 **Aluminium alloy (Mg 5%) open end blind folding rivet with gasket, dome head, with aluminium break pull mandrel**
- 🇫🇷 Rivet pliant aveugle à extrémité ouverte en alliage d'aluminium (Mg 5%) avec joint, tête bombée, avec clou de traction en aluminium
- 🇩🇪 Blindniete mit Flachrundkopf aus Aluminium (Mg 3,5%), mit Rundscheibe und Nagel aus Aluminium
- 🇪🇸 Remache de aluminio (Mg 5%), cabeza alomada, con junta, con vástago de aluminio
- 🇷🇺 Заклепка из алюминиевого сплава (Mg 5%) с открытым концом, глухая, складная, с прокладкой, куполообразной головкой, с алюминиевым отрывным стержнем

- XU 00** 🇬🇧 **DOME HEAD - Aluminium alloy body / aluminium mandrel**
- 🇫🇷 Tête bombée – Corps en aluminium naturel/clou en aluminium
  - 🇩🇪 FLACHRUNDKOPF – Körper aus Aluminium / Nagel aus Aluminium
  - 🇪🇸 CABEZA ALOMADA – remache aluminio / vástago aluminio
  - 🇷🇺 КУПОЛЬНАЯ ГОЛОВКА - корпус из алюминиевого сплава / алюминиевый стержень

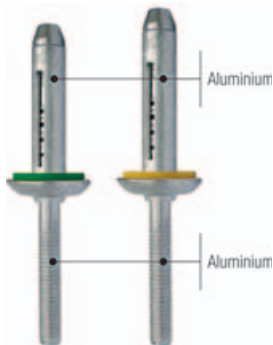


Technical Data Sheet

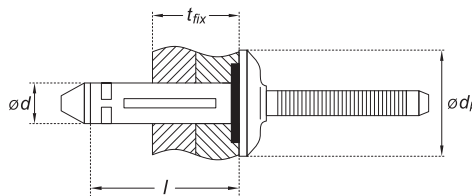


Item code	Size Ød x l (mm)	Thickness of fixture t <sub>fix</sub> min-max (mm)	Head diameter Ødk (mm)	Drill hole Ødh1 (mm)	Pcs. per box	Pcs. per carton
<b>Ød: 5,2 mm / black EPDM round sealing gasket</b>						
XU 00 52 017	5,2 x 17,5	0,5 - 4,8	11,5	5,40	250	5.000
XU 00 52 019	5,2 x 19,1	1,6 - 6,4			250	5.000
XU 00 52 022	5,2 x 22,2	4,7 - 9,5			250	5.000
XU 00 52 025	5,2 x 25,4	7,9 - 12,7			250	5.000
XU 00 52 028	5,2 x 28,6	11,1 - 15,9			250	5.000
XU 00 52 031	5,2 x 31,8	14,3 - 19,1			250	5.000
<b>Ød: 6,3 mm / black EPDM round sealing gasket</b>						
XU 00 63 020	6,3 x 20,2	1,6 - 6,4	14,5	6,50	250	2.500
XU 00 63 023	6,3 x 23,4	3,2 - 9,5			250	2.500
XU 00 63 026	6,3 x 26,5	6,4 - 12,7			200	2.000
XU 00 63 029	6,3 x 29,7	9,5 - 15,9			200	2.000

- XUL 00** 🇬🇧 **LARGE DOME HEAD - Aluminium alloy body / aluminium mandrel**
- 🇫🇷 Tête bombée large – Corps en aluminium naturel / clou en aluminium
  - 🇩🇪 BREITER FLACHRUNDKOPF – Körper aus Aluminium / Nagel aus Aluminium
  - 🇪🇸 CABEZA ANCHA – remache aluminio / vástago aluminio
  - 🇷🇺 ШИРОКАЯ КУПОЛЬНАЯ ГОЛОВКА - корпус из алюминиевого сплава / алюминиевый стержень



Item code	Size Ød x l (mm)	Thickness of fixture t <sub>fix</sub> min-max (mm)	Head diameter Ødk (mm)	Drill hole Ødh1 (mm)	Pcs. per box	Pcs. per carton
<b>Ød: 7,7 mm / green EPDM round sealing gasket</b>						
XUL 00 77 028	7,7 x 28	1,9 - 9,5	19	8	100	1.000
<b>Ød: 7,7 mm / yellow EPDM round sealing gasket</b>						
XUL 00 77 034	7,7 x 34	6,4 - 15,9	19	8	100	1.000



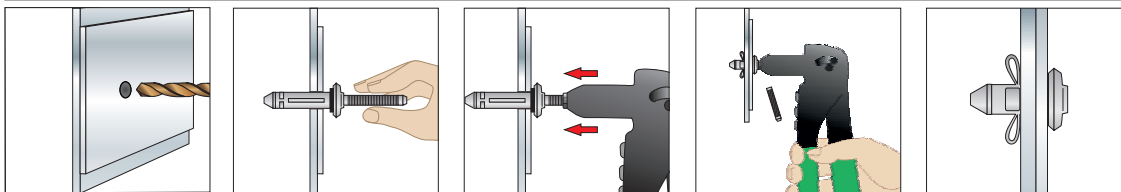
**Advantages:**

- special folding rivet, for an effective fixing even on low stiffness materials (as plastic materials) and/or thinner materials
- round gasket, for a better vibration/sealing resistance, compared to traditional rivets

Technical Data Sheet



Installation sequence / Instructions de mise en oeuvre / Setzanweisung / Secuencia de instalación / Порядок монтажа



Box / Boîte / Verpackung / Caja / Упаковка



For joining two or more components in tinsmithery/roofings, windows, industrial usages,...

# RA

**EN ISO 15977 - Painted aluminium alloy (Mg 5%) open end blind rivet dome head, with zinc plated steel break pull mandrel**

EN ISO 15977 - Rivet aveugle à corps ouvert en aluminium (Mg 5%) laqué, tête bombée, avec clou en acier zingué

EN ISO 15977 - Blindniete Flachrundkopf aus Aluminium (Mg 5%), lackiert, mit Nagel aus verzinktem Stahl

EN ISO 15977 - Remache de aluminio (Mg 5%) barnizado, cabeza alomada, con vástago de acero cincado

EN ISO 15977 - Вытяжная заклепка из окрашенного алюминия (Mg 5%), с полукруглым/стандартным бортиком, стержень из оцинкованной стали

**RA 01** RAL 9010 pure white painted aluminium body / zinc plated steel mandrel

Corps en aluminium laqué blanc RAL 9010 / clou en acier

Körper aus lackiertem Aluminium reinweiß RAL 9010 / Nagel aus Stahl

Cuerpo aluminio blanco puro RAL 9010 / vástago acero

тела: окрашенный алюминий RAL 9010 / стержень: сталь

RAL 9010  
Pure white



Item code	Size Ød x l (mm)	Thickness of fixture t <sub>fix</sub> min-max (mm)	Head diameter Ødk (mm)	Drill hole Ødh1 (mm)	Pcs. per box	Pcs. per carton
Ød: 3 mm						
RA 01 30 008	3 x 8	3,5 - 5	6	3,1	1.000	20.000
RA 01 30 010	3 x 10	5 - 7			1.000	20.000
RA 01 30 012	3 x 12	7 - 9			1.000	20.000
Ød: 3,2 mm						
RA 01 32 008	3,2 x 8	3,5 - 5	6,5	3,3	1.000	20.000
RA 01 32 010	3,2 x 10	5 - 7			1.000	20.000
RA 01 32 012	3,2 x 12	7 - 9			1.000	20.000
Ød: 4 mm						
RA 01 40 008	4 x 8	3 - 5	8	4,1	1.000	10.000
RA 01 40 010	4 x 10	5 - 6,5			1.000	10.000
RA 01 40 012	4 x 12	6,5 - 8,5			1.000	10.000
RA 01 40 016	4 x 16	8,5 - 12,5			500	10.000
Ød: 4,8 mm						
RA 01 48 008	4,8 x 8	2,5 - 4	9,5	5	500	5.000
RA 01 48 010	4,8 x 10	4 - 6			500	5.000
RA 01 48 012	4,8 x 12	6 - 8			500	5.000
RA 01 48 016	4,8 x 16	8 - 12			500	5.000

**RA 07** RAL 9002 grey white painted aluminium body / zinc plated steel mandrel

corps en aluminium laqué blanc gris RAL 9002 / clou en acier zingué

RAL 9002 grauweiß lackierter Aluminiumkörper/verzinkter Stahl-Spanndorn

cuerpo aluminio blanco grisáceo RAL 9002 / vástago acero






тела: окрашенный алюминий RAL 9002 / стержень: сталь

RAL 9002  
Grey white







Item code	Size Ød x l (mm)	Thickness of fixture t <sub>fix</sub> min-max (mm)	Head diameter Ødk (mm)	Drill hole Ødh1 (mm)	Pcs. per box	Pcs. per carton
Ød: 3 mm						
RA 07 30 006	3 x 6	1,5 - 3,5	6	3,1	1.000	20.000
RA 07 30 008	3 x 8	3,5 - 5			1.000	20.000
RA 07 30 010	3 x 10	5 - 7			1.000	20.000
Ød: 3,2 mm						
RA 07 32 006	3,2 x 6	1,5 - 3,5	6,5	3,3	1.000	20.000
RA 07 32 008	3,2 x 8	3,5 - 5			1.000	20.000
RA 07 32 010	3,2 x 10	5 - 7			1.000	20.000
RA 07 32 012	3,2 x 12	7 - 9			1.000	20.000
Ød: 3,4 mm						
RA 07 34 006	3,4 x 6	1,5 - 3,5	6,5	3,5	1.000	20.000
RA 07 34 008	3,4 x 8	3,5 - 5			1.000	20.000
RA 07 34 010	3,4 x 10	5 - 7			1.000	20.000
Ød: 4 mm						
RA 07 40 008	4 x 8	3 - 5	8	4,1	1.000	10.000
RA 07 40 010	4 x 10	5 - 6,5			1.000	10.000
RA 07 40 012	4 x 12	6,5 - 8,5			1.000	10.000
RA 07 40 016	4 x 16	8,5 - 12,5			500	10.000
Ød: 4,8 mm						
RA 07 48 010	4,8 x 10	4 - 6	9,5	5	500	5.000
RA 07 48 012	4,8 x 12	6 - 8			500	5.000
RA 07 48 016	4,8 x 16	8 - 12			500	5.000

# RA

-  **EN ISO 15977 - Painted aluminium alloy (Mg 5%) open end blind rivet dome head, with zinc plated steel break pull mandrel**
-  EN ISO 15977 - Rivet aveugle à corps ouvert en aluminium (Mg 5%) laqué, tête bombée, avec clou en acier zingué
-  EN ISO 15977 - Blindniete Flachrundkopf aus Aluminium (Mg 5%), lackiert, mit Nagel aus verzinktem Stahl
-  EN ISO 15977 - Remache de aluminio (Mg 5%) barnizado, cabeza alomada, con vástago de acero cincado
-  EN ISO 15977 - Вытяжная заклепка из окрашенного алюминия (Mg 5%), с полукруглым/стандартным бортиком, стержень из оцинкованной стали










## RA 08 RAL 1013 oyster white painted aluminium body / zinc plated steel mandrel

-  Corps en aluminium blanc perle RAL 1013 / clou en acier
-  Körper aus lackiertem Aluminium perlweiß RAL 1013 / Nagel aus Stahl
-  Cuerpo aluminio blanco perla RAL 1013 / vástago acero
-  тела: окрашенный алюминий RAL 1013 / стержень: сталь

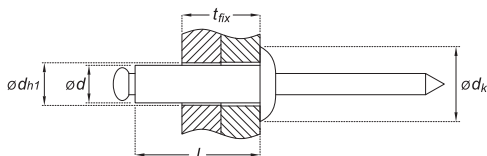
RAL 1013  
Oyster white



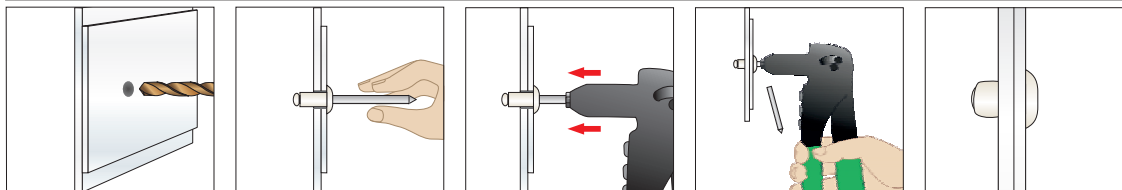
inBlister®  
500

Item code	Size $\varnothing d \times l$ (mm)	Thickness of fixture $t_{fix}$ min-max (mm)	Head diameter $\varnothing d_k$ (mm)	Drill hole $\varnothing d_{h1}$ (mm)	Pcs. per box	Pcs. per carton
<b><math>\varnothing d</math>: 3,2 mm</b>						
 <b>RA 08 32 006</b>	3,2 x 6	1,5 - 3,5	6,5	3,3	1.000	20.000
 <b>RA 08 32 008</b>	3,2 x 8	3,5 - 5				
 <b>RA 08 32 010</b>	3,2 x 10	5 - 7				
<b><math>\varnothing d</math>: 4 mm</b>						
 <b>RA 08 40 008</b>	4 x 8	3 - 5	8	4,1	1.000	10.000
 <b>RA 08 40 010</b>	4 x 10	5 - 6,5				
 <b>RA 08 40 012</b>	4 x 12	6,5 - 8,5				
<b><math>\varnothing d</math>: 4,8 mm</b>						
 <b>RA 08 48 010</b>	4,8 x 10	4 - 6	9,5	5	500	5.000
 <b>RA 08 48 012</b>	4,8 x 12	6 - 8				
 <b>RA 08 48 016</b>	4,8 x 16	8 - 12				

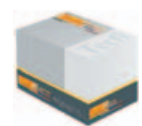
Technical  
Data Sheet



Installation sequence / Instructions de mise en oeuvre / Setzanweisung / Secuencia de instalación / Порядок монтажа



Box / Boîte / Verpackung /  
Caja / Упаковка



For joining two or more components in tinsmithery/roofings, windows, industrial usages,...

# RA

**EN ISO 15977 - Painted aluminium alloy (Mg 5%) open end blind rivet dome head, with zinc plated steel break pull mandrel**

EN ISO 15977 - Rivet aveugle à corps ouvert en aluminium (Mg 5%) laqué, tête bombée, avec clou en acier zingué

EN ISO 15977 - Blindniete Flachrundkopf aus Aluminium (Mg 5%), lackiert, mit Nagel aus verzinktem Stahl

EN ISO 15977 - Remache de aluminio (Mg 5%) barnizado, cabeza alomada, con vástago de acero cincado

EN ISO 15977 - Вытяжная заклепка из окрашенного алюминия (Mg 5%), с полукруглым/стандартным бортиком, стержень из оцинкованной стали

**RA 09** RAL 9006 white aluminium painted aluminium body / zinc plated steel mandrel

corps en aluminium laqué aluminium blanc RAL 9006 / clou en acier zingué

RAL 9006 weissaluminium lackierter Aluminiumkörper / verzinkter Stahldorn

cuerpo aluminio RAL 9006 aluminio blanco / vástago acero

тела: окрашенный алюминий RAL 9006 / стержень: сталь

RAL 9006  
White aluminium



Item code	Size Ød x l (mm)	Thickness of fixture t <sub>fix</sub> min-max (mm)	Head diameter Ødk (mm)	Drill hole Ødh1 (mm)	Pcs. per box	Pcs. per carton
Ød: 4 mm						
RA 09 40 008	4 x 8	3 - 5	8	4,1	1.000	10.000
RA 09 40 010	4 x 10	5 - 6,5			1.000	10.000
RA 09 40 012	4 x 12	6,5 - 8,5			1.000	10.000
Ød: 4,8 mm						
RA 09 48 010	4,8 x 10	4 - 6	9,5	5	500	5.000
RA 09 48 012	4,8 x 12	6 - 8			500	5.000

**RA 11** RAL 7016 anthracite grey painted aluminium body / zinc plated steel mandrel

corps en aluminium laqué aluminium gris anthracite RAL 7016 / clou en acier zingué

RAL 7016 Anthrazitgrau lackierter Aluminiumkörper / verzinkter Stahldorn

cuerpo aluminio RAL 7016 gris antracita / vástago acero

тела: окрашенный алюминий RAL 7016 / стержень: сталь






RAL 7016  
Anthracite grey







Item code	Size Ød x l (mm)	Thickness of fixture t <sub>fix</sub> min-max (mm)	Head diameter Ødk (mm)	Drill hole Ødh1 (mm)	Pcs. per box	Pcs. per carton
Ød: 3,2 mm						
RA 11 32 006	3,2 x 6	1,5 - 3,5	6,5	3,3	1.000	20.000
RA 11 32 008	3,2 x 8	3,5 - 5			1.000	20.000
RA 11 32 010	3,2 x 10	5 - 7			1.000	20.000
RA 11 32 012	3,2 x 12	7 - 9			1.000	20.000
Ød: 3,4 mm						
RA 11 34 006	3,4 x 6	1,5 - 3,5	6,5	3,5	1.000	20.000
RA 11 34 008	3,4 x 8	3,5 - 5			1.000	20.000
RA 11 34 010	3,4 x 10	5 - 7			1.000	20.000
Ød: 4 mm						
RA 11 40 008	4 x 8	3 - 5	8	4,1	1.000	10.000
RA 11 40 010	4 x 10	5 - 6,5			1.000	10.000
RA 11 40 012	4 x 12	6,5 - 8,5			1.000	10.000
RA 11 40 016	4 x 16	8,5 - 12,5			500	10.000
Ød: 4,8 mm						
RA 11 48 010	4,8 x 10	4 - 6	9,5	5	500	5.000
RA 11 48 012	4,8 x 12	6 - 8			500	5.000
RA 11 48 016	4,8 x 16	8 - 12			500	5.000



# RA

-  EN ISO 15977 - Painted aluminium alloy (Mg 5%) open end blind rivet dome head, with zinc plated steel break pull mandrel
-  EN ISO 15977 - Rivet aveugle à corps ouvert en aluminium (Mg 5%) laqué, tête bombée, avec clou en acier zingué
-  EN ISO 15977 - Blindniete Flachrundkopf aus Aluminium (Mg 5%), lackiert, mit Nagel aus verzinktem Stahl
-  EN ISO 15977 - Remache de aluminio (Mg 5%) barnizado, cabeza alomada, con vástago de acero cincado
-  EN ISO 15977 - Вытяжная заклепка из окрашенного алюминия (Mg 5%), с полукруглым/стандартным бортиком, стержень из оцинкованной стали




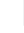









## RA 06 RAL 9005 black painted aluminium body / zinc plated steel mandrel

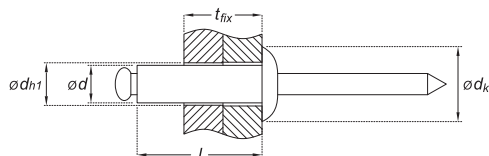
-  Corps en aluminium laqué noir foncé RAL 9005 / clou en acier
-  Körper aus lackiertem Aluminium tiefschwarz RAL 9005 / Nagel aus Stahl
-  Cuerpo aluminio negro intenso RAL 9005 / vástago acero
-  тела: окрашенный алюминий RAL 9005 / стержень: сталь



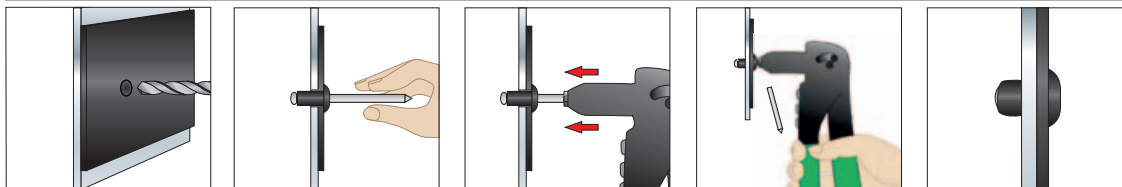
RAL 9005  
Jet black



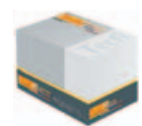
Item code	Size $\varnothing d \times l$ (mm)	Thickness of fixture $t_{fix}$ min-max (mm)	Head diameter $\varnothing dk$ (mm)	Drill hole $\varnothing dh1$ (mm)	Pcs. per box	Pcs. per carton
<b>Ød: 3 mm</b>						
 RA 06 30 008	3 x 8	3,5 - 5	6	3,1	1.000	20.000
 RA 06 30 010	3 x 10	5 - 7			1.000	20.000
 RA 06 30 012	3 x 12	7 - 9			1.000	20.000
<b>Ød: 3,2 mm</b>						
 RA 06 32 008	3,2 x 8	3,5 - 5	6,5	3,3	1.000	20.000
 RA 06 32 010	3,2 x 10	5 - 7			1.000	20.000
 RA 06 32 012	3 x 12	7 - 9			1.000	20.000
<b>Ød: 4 mm</b>						
 RA 06 40 008	4 x 8	3 - 5	8	4,1	1.000	10.000
 RA 06 40 010	4 x 10	5 - 6,5			1.000	10.000
 RA 06 40 012	4 x 12	6,5 - 8,5			1.000	10.000
<b>Ød: 4,8 mm</b>						
 RA 06 48 008	4,8 x 8	2,5 - 4	9,5	5	500	5.000
 RA 06 48 010	4,8 x 10	4 - 6			500	5.000
 RA 06 48 012	4,8 x 12	6 - 8			500	5.000
 RA 06 48 016	4,8 x 16	8 - 12			500	5.000



Installation sequence / Instructions de mise en oeuvre / Setzanweisung / Secuencia de instalación / Порядок монтажа








Box / Boîte / Verpackung / Caja / Упаковка







For joining two or more components in tinsmithery/roofings, windows, industrial usages,...

# RA








-  **EN ISO 15977 - Painted aluminium alloy (Mg 5%) open end blind rivet dome head, with zinc plated steel break pull mandrel**
-  EN ISO 15977 - Rivet aveugle à corps ouvert en aluminium (Mg 5%) laqué, tête bombée, avec clou en acier zingué
-  EN ISO 15977 - Blindniete Flachrundkopf aus Aluminium (Mg 5%), lackiert, mit Nagel aus verzinktem Stahl
-  EN ISO 15977 - Remache de aluminio (Mg 5%) barnizado, cabeza alomada, con vástago de acero cincado
-  EN ISO 15977 - Вытяжная заклепка из окрашенного алюминия (Mg 5%), с полукруглым/стандартным бортиком, стержень из оцинкованной стали

## RA 04 RAL 8004 Copper brown (brick red) painted aluminium body / zinc plated steel mandrel





-  Corps en aluminium laqué brun cuivré RAL 8004 / clou en acier
-  Körper aus lackiertem Aluminium kupferbraun RAL 8004 / Nagel aus Stahl
-  Cuerpo aluminio rojo teja RAL 8004 / vástago acero
-  тела: окрашенный алюминий RAL 8004 / стержень: сталь

**RAL 8004**  
Copper brown










Item code	Size $\varnothing d \times l$ (mm)	Thickness of fixture $t_{fix}$ min-max (mm)	Head diameter $\varnothing dk$ (mm)	Drill hole $\varnothing dh1$ (mm)	Pcs. per box	Pcs. per carton
$\varnothing d: 3,4$ mm						
 RA 04 34 008	3,4 x 8	3,5 - 5	6,5	3,5	1.000	20.000
 RA 04 34 010	3,4 x 10	5 - 7				
$\varnothing d: 4$ mm						
 RA 04 40 008	4 x 8	3 - 5	8	4,1	1.000	10.000
 RA 04 40 010	4 x 10	5 - 6,5				
 RA 04 40 012	4 x 12	6,5 - 8,5				
$\varnothing d: 4,8$ mm						
 RA 04 48 010	4,8 x 10	4 - 6	9,5	5	500	5.000
 RA 04 48 012	4,8 x 12	6 - 8				

## RA 03 RAL 3009 oxide red painted aluminium body / zinc plated steel mandrel






-  Corps en aluminium laqué rouge oxyde RAL 3009 / clou en acier
-  Körper aus lackiertem Aluminium oxidrot RAL 3009 / Nagel aus Stahl
-  Cuerpo aluminio rojo óxido RAL 3009 / vástago acero
-  тела: окрашенный алюминий RAL 3009 / стержень: сталь

**RAL 3009**  
Oxide red







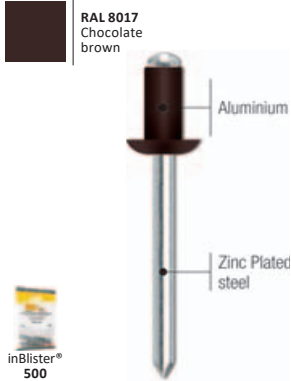
Item code	Size $\varnothing d \times l$ (mm)	Thickness of fixture $t_{fix}$ min-max (mm)	Head diameter $\varnothing dk$ (mm)	Drill hole $\varnothing dh1$ (mm)	Pcs. per box	Pcs. per carton
$\varnothing d: 3,4$ mm						
 RA 03 34 008	3,4 x 8	3,5 - 5	6,5	3,5	1.000	20.000
 RA 03 34 010	3,4 x 10	5 - 7				
$\varnothing d: 4$ mm						
 RA 03 40 008	4 x 8	3 - 5	8	4,1	1.000	10.000
 RA 03 40 010	4 x 10	5 - 6,5				
 RA 03 40 012	4 x 12	6,5 - 8,5				
$\varnothing d: 4,8$ mm						
 RA 03 48 010	4,8 x 10	4 - 6	9,5	5	500	5.000
 RA 03 48 012	4,8 x 12	6 - 8				










# RA

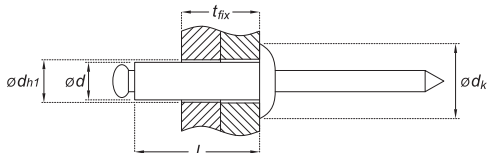
-  EN ISO 15977 - Painted aluminium alloy (Mg 5%) open end blind rivet dome head, with zinc plated steel break pull mandrel
-  EN ISO 15977 - Rivet aveugle à corps ouvert en aluminium (Mg 5%) laqué, tête bombée, avec clou en acier zingué
-  EN ISO 15977 - Blindniete Flachrundkopf aus Aluminium (Mg 5%), lackiert, mit Nagel aus verzinktem Stahl
-  EN ISO 15977 - Remache de aluminio (Mg 5%) barnizado, cabeza alomada, con vástago de acero cincado
-  EN ISO 15977 - Вытяжная заклепка из окрашенного алюминия (Mg 5%), с полукруглым/стандартным бортиком, стержень из оцинкованной стали

## RA 02 RAL 8017 chocolate brown painted aluminium body / zinc plated steel mandrel

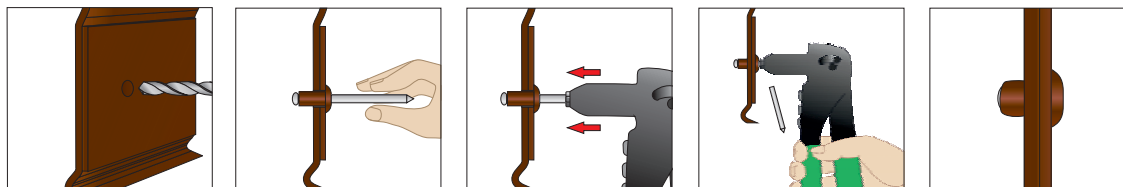
-  Corps en aluminium laqué marron foncé RAL 8017 / clou en acier
-  Körper aus lackiertem Aluminium schokoladenbraun RAL 8017 / Nagel aus Stahl
-  Cuerpo aluminio marrón oscuro RAL 8017 / vástago acero
-  тела: окрашенный алюминий RAL 8017 / стержень: сталь



Item code	Size $\varnothing d \times l$ (mm)	Thickness of fixture $t_{fix}$ min-max (mm)	Head diameter $\varnothing dk$ (mm)	Drill hole $\varnothing dh1$ (mm)	Pcs. per box	Pcs. per carton
<b><math>\varnothing d</math>: 3 mm</b>						
RA 02 30 006	3 x 6	1,5 - 3,5			1.000	20.000
 RA 02 30 008	3 x 8	3,5 - 5	6	3,1	1.000	20.000
 RA 02 30 010	3 x 10	5 - 7			1.000	20.000
<b><math>\varnothing d</math>: 3,2 mm</b>						
RA 02 32 006	3,2 x 6	1,5 - 3,5			1.000	20.000
RA 02 32 008	3,2 x 8	3,5 - 5	6,5	3,3	1.000	20.000
RA 02 32 010	3,2 x 10	5 - 7			1.000	20.000
RA 02 32 012	3,2 x 12	7 - 9			1.000	20.000
<b><math>\varnothing d</math>: 3,4 mm</b>						
 RA 02 34 006	3,4 x 6	1,5 - 3,5			1.000	20.000
 RA 02 34 008	3,4 x 8	3,5 - 5	6,5	3,5	1.000	20.000
 RA 02 34 010	3,4 x 10	5 - 7			1.000	20.000
<b><math>\varnothing d</math>: 4 mm</b>						
 RA 02 40 008	4 x 8	3 - 5			1.000	10.000
 RA 02 40 010	4 x 10	5 - 6,5	8	4,1	1.000	10.000
 RA 02 40 012	4 x 12	6,5 - 8,5			1.000	10.000
RA 02 40 016	4 x 16	8,5 - 12,5			500	10.000
<b><math>\varnothing d</math>: 4,8 mm</b>						
RA 02 48 010	4,8 x 10	4 - 6			500	5.000
 RA 02 48 012	4,8 x 12	6 - 8	9,5	5	500	5.000
RA 02 48 016	4,8 x 16	8 - 12			500	5.000



### Installation sequence / Instructions de mise en oeuvre / Setzanweisung / Secuencia de instalación / Порядок монтажа



Box / Boîte / Verpackung / Caja / Упаковка



For joining two or more components in tinsmithery/roofings, windows, industrial usages,...

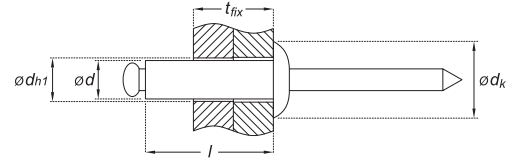
\*: Mg 3,5% until stockout, then Mg 5%

# RA

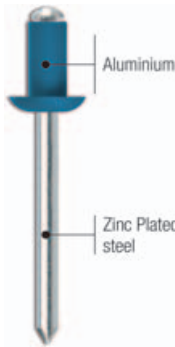
- EN ISO 15977 - Painted aluminium alloy (Mg 5%) open end blind rivet dome head, with zinc plated steel break pull mandrel
- EN ISO 15977 - Rivet aveugle à corps ouvert en aluminium (Mg 5%) laqué, tête bombée, avec clou en acier zingué
- EN ISO 15977 - Blindniete Flachrundkopf aus Aluminium (Mg 5%), lackiert, mit Nagel aus verzinktem Stahl
- EN ISO 15977 - Remache de aluminio (Mg 5%) barnizado, cabeza alomada, con vástago de acero cincado
- EN ISO 15977 - Вытяжная заклепка из окрашенного алюминия (Mg 5%), с полукруглым/стандартным бортиком, стержень из оцинкованной стали

## RA 10 RAL 5017 traffic blue painted aluminium body / zinc plated steel mandrel

- Corps en aluminium laqué bleu signalisation RAL 5017 / clou en acier
- Körper aus lackiertem Aluminium verkehrsblau RAL 5017 / Nagel aus Stahl
- Cuerpo aluminio azul tráfico RAL 5017 / vástago acero
- тела: окрашенный алюминий RAL 5017 / стержень: сталь



RAL 5017  
Traffic blue

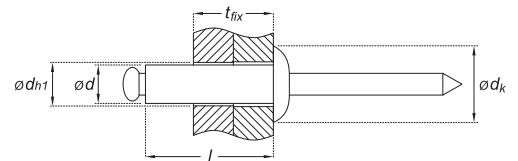


inBlister®  
502

Item code	Size Ød x l (mm)	Thickness of fixture t <sub>fix</sub> min-max (mm)	Head diameter Ødk (mm)	Drill hole Ødh1 (mm)	Pcs. per box	Pcs. per carton
Ød: 4 mm						
in RA 10 40 010	4 x 10	5 - 6,5	8	4,1	1.000	10.000
in RA 10 40 012	4 x 12	6,5 - 8,5				
Ød: 4,8 mm						
in RA 10 48 012	4,8 x 12	6 - 8	9,5	5	500	5.000

## RA 01 RAL 9010 pure white painted aluminium body / zinc plated steel mandrel

- Corps en aluminium laqué blanc RAL 9010 / clou en acier
- Körper aus lackiertem Aluminium reinweiß RAL 9010 / Nagel aus Stahl
- Cuerpo aluminio blanco puro RAL 9010 / vástago acero
- тела: окрашенный алюминий RAL 9010 / стержень: сталь



RAL 9010  
Pure white

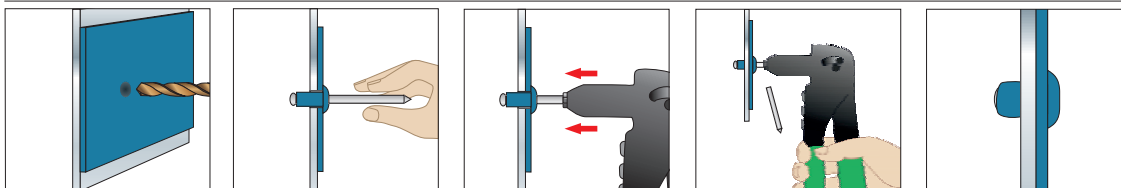


Item code	Size Ød x l (mm)	Thickness of fixture t <sub>fix</sub> min-max (mm)	Head diameter Ødk (mm)	Drill hole Ødh1 (mm)	Pcs. per box	Pcs. per carton
Ød: 4 mm						
RA 01 40 010	4 x 10	5 - 6,5	8	4,1	1.000	10.000
RA 01 40 012	4 x 12	6,5 - 8,5				
Ød: 4,8 mm						
RA 01 48 012	4,8 x 12	6 - 8	9,5	5	500	5.000

For the whole range of the rivet RA01 (RAL 9010 pure white), see page 331 / Pour toute la gamme du rivet RA01 (blanc pur RAL 9010), voir page 331 / Für die ganze Auswahl der RA01 (RAL 9010 Pur Weiss), siehe Seite 331 / Para consultar la gama completa del remache RA01 (RAL 9010), miren pág. 331 / Для полного диапазона этой заклепки RA01 (чистый белый RAL9010), пожалуйста, смотрите страницу. 331



Installation sequence / Instructions de mise en oeuvre / Setzanweisung / Secuencia de instalación / Порядок монтажа



Box / Boîte / Verpackung / Caja / Упаковка



For joining two or more components in tinsmithery/roofings, windows, industrial usages,...  
These colours and sizes are particularly suitable for vehicle license plates.

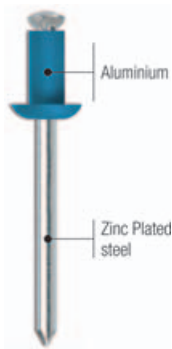
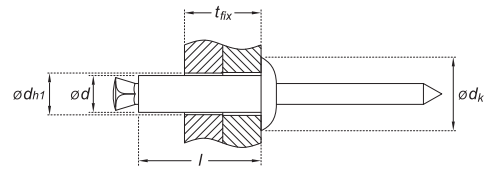
# PRA

## PEEL type painted aluminium alloy (Mg 3,5%) open end blind rivet dome head, with zinc plated steel break pull mandrel

- Rivet aveugle à corps ouvert en alliage d'aluminium (Mg 3,5%), ouverture à fleur (peel), tête bombée avec clou en acier zingué
- Spreitzblindniete mit Flachrundkopf, Aluminium lackiert (Mg 3,5), mit Nagel aus verzinktem Stahl
- Remache flor (tipo "peel") de aluminio (Mg 3,5%) barnizado, cabeza alomada, con vástago de acero cincado
- Лепестковые заклепки окрашенные алюминий (Mg 3,5%), закругленная головка с оцинкованным стержнем

### PRA 10 RAL 5017 traffic blue painted aluminium body / zinc plated steel mandrel

- Corps en aluminium laqué bleu signalisation RAL 5017 / clou en acier
- Körper aus lackiertem Aluminium verkehrsblau RAL 5017 / Nagel aus Stahl
- Cuerpo aluminio azul tráfico RAL 5017 / vástago acero
- тела: окрашенный алюминий RAL 5017 / стержень: сталь



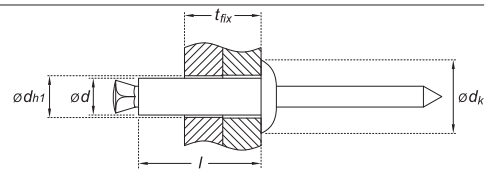
Peel type



Item code	Size ød x l (mm)	Thickness of fixture t <sub>fix</sub> min-max (mm)	Head diameter ødk (mm)	Drill hole ødh1 (mm)	Pcs. per box	Pcs. per carton
ød: 4,8 mm						
PRA 10 48 012	4,8 x 12	2 - 6	9,5	5,2	500	5.000
PRA 10 48 016	4,8 x 16	6 - 10	9,5	5,2	500	5.000

### PRA 01 RAL 9010 pure white painted aluminium body / zinc plated steel mandrel

- Corps en aluminium laqué blanc RAL 9010 / clou en acier
- Körper aus lackiertem Aluminium reinweiß RAL 9010 / Nagel aus Stahl
- Cuerpo aluminio blanco puro RAL 9010 / vástago acero
- тела: окрашенный алюминий RAL 9010 / стержень: сталь



Peel type

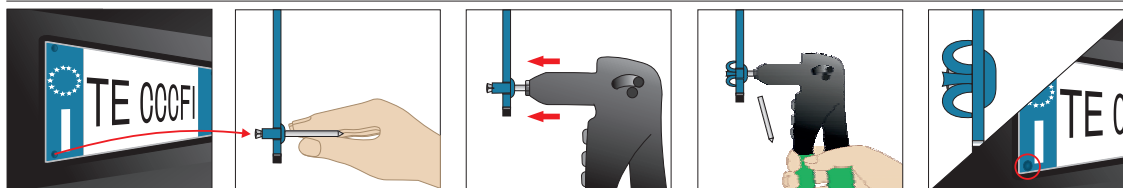


Item code	Size ød x l (mm)	Thickness of fixture t <sub>fix</sub> min-max (mm)	Head diameter ødk (mm)	Drill hole ødh1 (mm)	Pcs. per box	Pcs. per carton
ød: 4,8 mm						
PRA 01 48 012	4,8 x 12	2 - 6	9,5	5,2	500	5.000
PRA 01 48 016	4,8 x 16	6 - 10	9,5	5,2	500	5.000



Technical Data Sheet

#### Installation sequence / Instructions de mise en oeuvre / Setzanweisung / Secuencia de instalación / Порядок монтажа



#### Box / Boîte / Verpackung / Caja / Упаковка

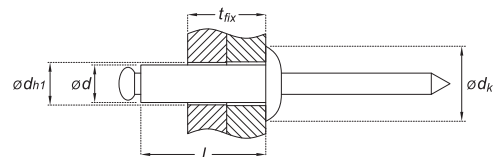


For joining two or more components in tinsmithery/roofings, windows, industrial usages,...  
These colours and sizes are particularly suitable for vehicle license plates.

# RA 05

Until stockout  
 Jusqu'à épuisement de stocks  
 Solange der Vorrat reicht  
 Hasta agotar existencias  
 до окончания стока

- EN ISO 15977 - Copper anodized aluminium alloy (Mg 3,5%) open end blind rivet dome head, with zinc plated steel break pull mandrel
- EN ISO 15977 - Rivet aveugle à corps ouvert en aluminium anodisé cuivre (Mg 3,5%) laqué, tête bombée, avec clou en acier zingué
- EN ISO 15977 - Blindniete aus Aluminium Kupfer anodisiert (Mg 3,5%) mit Flachrundkopf, mit Nagel aus verzinktem Stahl
- EN ISO 15977 - Remache de aluminio anodizado cobre (Mg 3,5%), cabeza alomada, con vástago de acero cincado
- EN ISO 15977 - Заклепка из медного анодированного алюминия (Mg 3,5%) закругленная головка из оцинкованной стали с оцинкованным стержнем

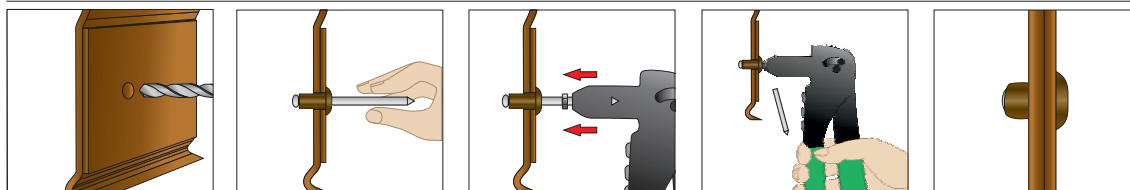


Item code	Size $\varnothing d \times l$ (mm)	Thickness of fixture $t_{fix}$ min-max (mm)	Head diameter $\varnothing dk$ (mm)	Drill hole $\varnothing dh1$ (mm)	Pcs. per box	Pcs. per carton
$\varnothing d: 3$ mm						
RA 05 30 010	3 x 10	5 - 7	6	3,1	1.000	20.000
$\varnothing d: 3,2$ mm						
RA 05 32 008	3,2 x 8	3,5 - 5	6,5	3,3	1.000	20.000
RA 05 32 010	3,2 x 10	5 - 7			1.000	20.000
RA 05 32 012	3,2 x 12	7 - 9			1.000	20.000
$\varnothing d: 3,4$ mm						
RA 05 34 006	3,4 x 6	1,5 - 3,5	6,5	3,5	1.000	20.000
RA 05 34 008	3,4 x 8	3,5 - 5			1.000	20.000
$\varnothing d: 4$ mm						
RA 05 40 008	4 x 8	3 - 5	8	4,1	1.000	10.000
RA 05 40 016	4 x 16	8,5 - 12,5			500	10.000
$\varnothing d: 4,8$ mm						
RA 05 48 010	4,8 x 10	4 - 6	9,5	5,2	500	5.000
RA 05 48 016	4,8 x 16	8 - 12			500	5.000

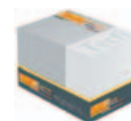
Technical Data Sheet



Installation sequence / Instructions de mise en oeuvre / Setzanweisung / Secuencia de instalación / Порядок монтажа



Box / Boîte / Verpackung / Caja / Упаковка



For joining two or more components in tinsmithery/roofings, windows, industrial usages,...

# RD 00

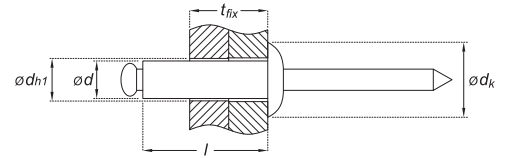
EN ISO 16582 - Copper open end blind rivet, dome head, with zinc plated steel break pull mandrel

EN ISO 16582 - Rivet aveugle à corps ouvert en cuivre, tête bombée, avec clou en acier zingué

EN ISO 16582 - Blindniete Flachrundkopf aus Kupfer, mit Nagel aus verzinktem Stahl

EN ISO 16582 - Remache de cobre, cabeza alomada, con vástago de acero cincado

EN ISO 16582 - Вытяжная заклепка из меди, с полукруглым/стандартным бортиком, стержень из оцинкованной стали



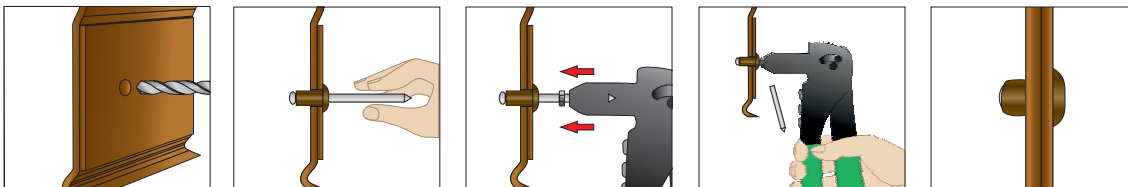
Item code	Size $\varnothing d \times l$ (mm)	Thickness of fixture $t_{fix}$ min-max (mm)	Head diameter $\varnothing dk$ (mm)	Drill hole $\varnothing dh1$ (mm)	Pcs. per box	Pcs. per carton
<b><math>\varnothing d: 3</math> mm</b>						
RD 00 30 006	3 x 6	2 - 3	6	3,1	1.000	10.000
RD 00 30 008	3 x 8	3 - 5			1.000	10.000
RD 00 30 010	3 x 10	5 - 7			1.000	10.000
RD 00 30 012	3 x 12	7 - 9			1.000	10.000
RD 00 30 014	3 x 14	9 - 11			1.000	10.000
RD 00 30 016	3 x 16	11 - 13			1.000	10.000
RD 00 30 018	3 x 18	13 - 15			1.000	10.000
RD 00 30 020	3 x 20	15 - 17			1.000	10.000
<b><math>\varnothing d: 3,2</math> mm</b>						
RD 00 32 006	3,2 x 6	2 - 3	6,5	3,3	1.000	10.000
RD 00 32 008	3,2 x 8	3 - 5			1.000	10.000
RD 00 32 010	3,2 x 10	5 - 7			1.000	10.000
RD 00 32 012	3,2 x 12	7 - 9			1.000	10.000
RD 00 32 014	3,2 x 14	9 - 11			1.000	10.000
RD 00 32 016	3,2 x 16	11 - 13			1.000	10.000
<b><math>\varnothing d: 4</math> mm</b>						
RD 00 40 006	4 x 6	2,5 - 3,5	8	4,1	1.000	10.000
RD 00 40 008	4 x 8	3,5 - 5			1.000	10.000
RD 00 40 010	4 x 10	5 - 7			1.000	10.000
RD 00 40 012	4 x 12	7 - 8,5			1.000	10.000
RD 00 40 014	4 x 14	8,5 - 10			500	5.000
RD 00 40 016	4 x 16	10 - 12,5			500	5.000
RD 00 40 018	4 x 18	12,5 - 15			500	5.000
RD 00 40 020	4 x 20	15 - 17,5			500	5.000
RD 00 40 025	4 x 25	17,5 - 20			500	5.000
<b><math>\varnothing d: 4,8</math> mm</b>						
RD 00 48 008	4,8 x 8	2,5 - 4	9,5	5	500	5.000
RD 00 48 010	4,8 x 10	4 - 6			500	5.000
RD 00 48 012	4,8 x 12	6 - 8			500	5.000
RD 00 48 014	4,8 x 14	8 - 10			500	5.000
RD 00 48 016	4,8 x 16	10 - 12			500	5.000
RD 00 48 018	4,8 x 18	12 - 14			500	5.000
RD 00 48 020	4,8 x 20	14 - 16			500	5.000

▲ Size not included in the standard EN ISO 16582

Technical Data Sheet



Installation sequence / Instructions de mise en oeuvre / Setzanweisung / Secuencia de instalación / Порядок монтажа







Box / Boîte / Verpackung / Caja / Упаковка







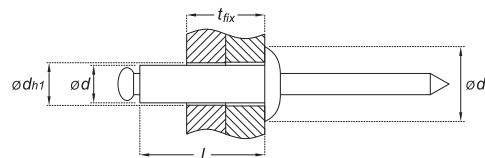
For joining two or more components in tinsmithery/roofings, windows, industrial usages,...













**EN ISO 15983 - A2 (AISI 304) stainless steel open end blind rivet, dome head, with stainless steel break pull mandrel**

-  EN ISO 15983 - Rivet aveugle à corps ouvert en acier Inox A2 (AISI 304), tête bombée, avec clou en acier inox
-  EN ISO 15983 - Blindniete Flachrundkopf aus Edelstahl A2 (AISI 304), mit Nagel aus verzinktem Stahl
-  EN ISO 15983 - Remache de acero inoxidable A2 (AISI 304), cabeza alomada, con vástago de acero inoxidable
-  EN ISO 15983 - Вытяжная заклепка из нержавеющей стали A2 (AISI 304), с полукруглым/стандартным бортиком, стержень из нержавеющей стали

**A2 (AISI 304) stainless steel body / stainless steel mandrel**

-  Corps et clou en acier INOX A2 (AISI 304)
-  Körper und Nagel aus Edelstahl A2 (AISI 304)
-  Cuerpo y vástago acero Inoxidable A2 (AISI 304)
-  тела и стержень: нержавеющая сталь A2 (AISI 304)

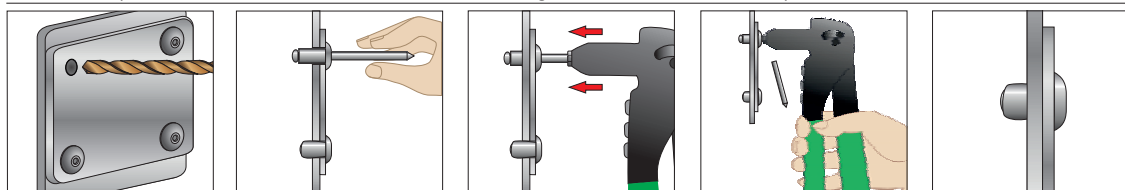


Item code	Size $\varnothing d \times l$ (mm)	Thickness of fixture $t_{fix}$ min-max (mm)	Head diameter $\varnothing dk$ (mm)	Drill hole $\varnothing dh1$ (mm)	Pcs. per box	Pcs. per carton
<b>Ø 3 mm</b>						
RC 00 30 006	3 x 6	0,5 - 3	6	3,1	1.000	10.000
RC 00 30 008	3 x 8	3 - 5			1.000	10.000
RC 00 30 010	3 x 10	5 - 6,5			1.000	10.000
RC 00 30 012	3 x 12	6,5 - 8,5			1.000	10.000
<b>Ø 3,2 mm</b>						
 RC 00 32 006	3,2 x 6	0,5 - 3	6,5	3,3	1.000	10.000
 RC 00 32 008	3,2 x 8	3 - 5			1.000	10.000
 RC 00 32 010	3,2 x 10	5 - 6,5			1.000	10.000
 RC 00 32 012	3 x 12	6,5 - 8,5			1.000	10.000
<b>Ø 4 mm</b>						
RC 00 40 006	4 x 6	1 - 2,5	8	4,1	1.000	10.000
 RC 00 40 008	4 x 8	2,5 - 4,5			1.000	10.000
 RC 00 40 010	4 x 10	4,5 - 6,5			1.000	10.000
 RC 00 40 012	4 x 12	6,5 - 8,5			500	5.000
 RC 00 40 014	4 x 14	8,5 - 10			500	5.000
RC 00 40 016	4 x 16	10 - 12			500	5.000
<b>Ø 4,8 mm</b>						
 RC 00 48 008	4,8 x 8	2 - 4	9,5	5	500	5.000
 RC 00 48 010	4,8 x 10	4 - 6			500	5.000
 RC 00 48 012	4,8 x 12	6 - 8			500	5.000
 RC 00 48 016	4,8 x 16	8 - 11			500	5.000
RC 00 48 018	4,8 x 18	11 - 13			500	5.000
RC 00 48 020	4,8 x 20	13 - 16			500	5.000
RC 00 48 025	4,8 x 25	16 - 19			250	2.500
RC 00 48 030	4,8 x 30	19 - 24			250	2.500

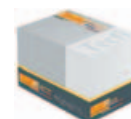
Technical Data Sheet



Installation sequence / Instructions de mise en oeuvre / Setzanweisung / Secuencia de instalación / Порядок монтажа



Box / Boîte / Verpackung / Caja / Упаковка



For joining two or more components in tinsmithery/roofings, windows, industrial usages,...



# RJ 00

EN ISO 15979 - Zinc plated steel open end blind rivet, dome head, with zinc plated steel break pull mandrel

EN ISO 15979 - Rivet aveugle à corps ouvert en aluminium, tête bombée, avec clou en acier zingué

EN ISO 15979 - Blindniete Flachrundkopf aus verzinktem Stahl, mit Nagel aus verzinktem Stahl

EN ISO 15979 - Remache de acero cincado, cabeza alomada, con vástago de acero cincado

EN ISO 15979 - Вытяжная заклепка из оцинкованной стали, с полукруглым/стандартным бортиком, стержень из оцинкованной стали

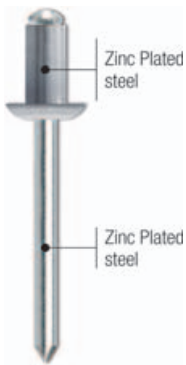
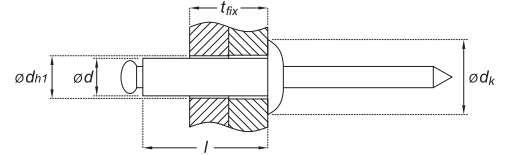
Zinc plated steel body / zinc plated steel mandrel

Corps en acier zingué / clou en acier zingué

Körper und Nagel aus verzinktem Stahl

Cuerpo y vástago de acero cincado

тела и стержень из оцинкованной стали

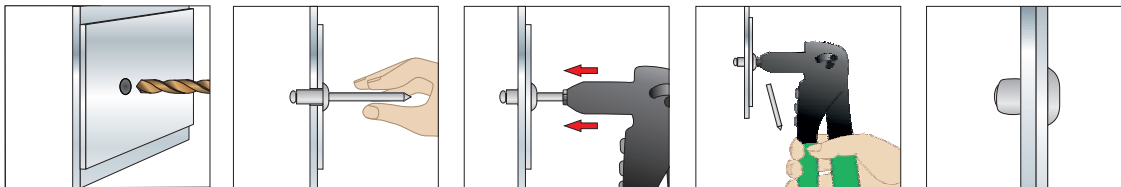


Item code	Size	Thickness of fixture	Head diameter	Drill hole	Pcs. per box	Pcs. per carton
	$\varnothing d \times l$ (mm)	$t_{fix}$ min - max (mm)	$\varnothing d_k$ (mm)	$\varnothing d_{h1}$ (mm)		
<b><math>\varnothing d</math>: 3,2 mm</b>						
RJ 00 32 006	3,2 x 6	0,5 - 3	6,5	3,3	1.000	10.000
RJ 00 32 008	3,2 x 8	3 - 5			1.000	10.000
RJ 00 32 010	3,2 x 10	5 - 6,5			1.000	10.000
RJ 00 32 012	3,2 x 12	6,5 - 8			1.000	10.000
RJ 00 32 016	3,2 x 16	8 - 12			1.000	10.000
<b><math>\varnothing d</math>: 4 mm</b>						
RJ 00 40 006	4 x 6	1 - 3	8	4,1	1.000	10.000
RJ 00 40 008	4 x 8	3 - 5			1.000	10.000
RJ 00 40 010	4 x 10	5 - 6,5			1.000	10.000
RJ 00 40 012	4 x 12	6,5 - 9			1.000	10.000
RJ 00 40 016	4 x 16	9 - 12			500	5.000
RJ 00 40 020	4 x 20	12 - 16	500	5.000		
<b><math>\varnothing d</math>: 4,8 mm</b>						
RJ 00 48 008	4,8 x 8	2,5 - 4	9,5	5	500	5.000
RJ 00 48 010	4,8 x 10	4 - 6			500	5.000
RJ 00 48 012	4,8 x 12	6 - 8			500	5.000
RJ 00 48 016	4,8 x 16	8 - 11			500	5.000
RJ 00 48 020	4,8 x 20	11 - 15			500	5.000
RJ 00 48 025	4,8 x 25	15 - 19,5	250	2.500		
RJ 00 48 030	4,8 x 30	19,5 - 25	250	2.500		

Technical Data Sheet



Installation sequence / Instructions de mise en oeuvre / Setzanweisung / Secuencia de instalación / Порядок монтажа



Box / Boîte / Verpackung / Caja / Упаковка



DiFor joining two or more components in tinsmithery/roofings, windows, industrial usages,...

# RV 00

🇬🇧 EN ISO 15978 - Aluminium alloy (Mg 3,5%) open end blind rivet, countersunk head, with zinc plated steel break pull mandrel

🇫🇷 EN ISO 15978 - Rivet aveugle à corps ouvert en aluminium (Mg 3,5%), tête fraisée, avec clou en acier zingué

🇩🇪 EN ISO 15978 - Blindniete Senkkopf aus Aluminium (Mg 3,5%), mit Nagel aus verzinktem Stahl

🇪🇸 EN ISO 15978 - Remache de aluminio (Mg 3,5%), cabeza avellanada, con vástago de acero cincado

🇷🇺 EN ISO 15978 - Вытяжная заклепка из алюминия (Mg 3,5%), потайной буртик, стержень из оцинкованной стали

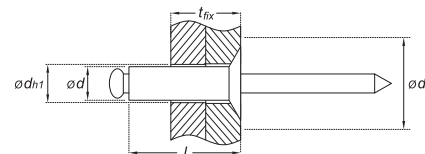
🇬🇧 Aluminium alloy body / zinc plated steel mandrel

🇫🇷 corps en aluminium naturel / clou en acier

🇩🇪 Körper aus Aluminium / Nagel aus Stahl

🇪🇸 Cuerpo aluminio natural / vástago acero

🇷🇺 тела: алюминий / стержень: сталь

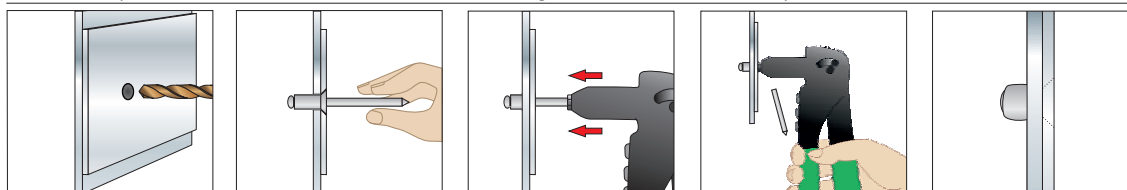


Item code	Size $\varnothing d \times l$ (mm)	Thickness of fixture $t_{fix}$ min-max (mm)	Head diameter $\varnothing d_k$ (mm)	Drill hole $\varnothing d_{h1}$ (mm)	Pcs. per box	Pcs. per carton
<b><math>\varnothing d</math>: 3,2 mm</b>						
RV 00 32 008	3,2 x 8	3,5 - 5	6,5	3,3	1.000	20.000
RV 00 32 010	3,2 x 10	5 - 7			1.000	20.000
RV 00 32 012	3,2 x 12	7 - 9			1.000	20.000
RV 00 32 016	3,2 x 16	9 - 13			1.000	10.000
<b><math>\varnothing d</math>: 4 mm</b>						
RV 00 40 008	4 x 8	2 - 5	8	4,1	1.000	10.000
RV 00 40 010	4 x 10	5 - 6,5			1.000	10.000
RV 00 40 012	4 x 12	6,5 - 8,5			1.000	10.000
RV 00 40 016	4 x 16	8,5 - 12,5			500	5.000
RV 00 40 020	4 x 20	12,5 - 16,5			500	5.000
<b><math>\varnothing d</math>: 4,8 mm</b>						
RV 00 48 008	4,8 x 8	2,5 - 4	9,5	5	500	5.000
RV 00 48 010	4,8 x 10	4 - 6			500	5.000
RV 00 48 012	4,8 x 12	6 - 8			500	5.000
RV 00 48 016	4,8 x 16	8 - 12			500	5.000
RV 00 48 020	4,8 x 20	12 - 15			500	5.000

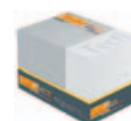
Technical Data Sheet



Installation sequence / Instructions de mise en oeuvre / Setzanweisung / Secuencia de instalación / Порядок монтажа



Box / Boîte / Verpackung / Caja / Упаковка



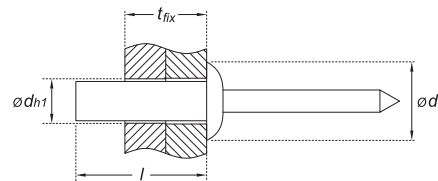
For joining two or more components in tinsmithery/roofings, windows, industrial usages,...

### EN ISO 15973 - Aluminium alloy (Mg 5%) closed end blind rivet, dome head, with steel break pull mandrel

- EN ISO 15973 – Rivet aveugle à corps fermé en aluminium (Mg 5%), tête bombée, avec clou en acier zingué
- EN ISO 15973 - Geschlossene Blindniete mit Flachrundkopf aus Aluminium (Mg 5%), mit Nagel aus verzinktem Stahl
- EN ISO 15973 - Remache estanco de aluminio (Mg 5%), cabeza alomada, con vástago de acero
- EN ISO 15973 - Вытяжная заклепка из алюминия (Mg 5%) с закрытым концом, куполообразная головка, со стальным разрывным стержнем

#### RO 00 Aluminium alloy body / steel mandrel

- Corps en aluminium naturel / clou en acier
- Körper aus lackiertem Aluminium / Nagel aus Stahl
- Cuerpo aluminio natural / vástago acero
- тела: алюминий / стержень: сталь



Item code	Size Ød x l (mm)	Thickness of fixture t <sub>fix</sub> min-max (mm)	Head diameter Ødk (mm)	Drill hole Ødh1 (mm)	Pcs. per box	Pcs. per carton
Ød: 4 mm						
RO 00 40 008	4 x 8	0,5 - 3,5	8	4,1	1.000	10.000
RO 00 40 009	4 x 9,5	3,5 - 5			1.000	10.000
RO 00 40 011	4 x 11	5 - 6,5			1.000	10.000
RO 00 40 012	4 x 12,5	6,5 - 8			1.000	10.000

#### RO 04 RAL 8004 Copper brown (brick red) painted aluminium body / steel mandrel

- Corps en aluminium laqué brun cuivré RAL 8004 / clou en acier
- Körper aus lackiertem Aluminium kupferbraun RAL 8004 / Nagel aus Stahl
- Cuerpo aluminio / vástago acero. Rojo teja RAL 8004
- тела: окрашенный алюминий RAL 8004 / стержень: сталь



RAL 8004  
Copper  
brown

Item code	Size Ød x l (mm)	Thickness of fixture t <sub>fix</sub> min-max (mm)	Head diameter Ødk (mm)	Drill hole Ødh1 (mm)	Pcs. per box	Pcs. per carton
Ød: 4 mm						
RO 04 40 008	4 x 8	0,5 - 3,5	8	4,1	1.000	10.000
RO 04 40 009	4 x 9,5	3,5 - 5			1.000	10.000
RO 04 40 011	4 x 11	5 - 6,5			1.000	10.000
RO 04 40 012	4 x 12,5	6,5 - 8			1.000	10.000

#### RO 07 RAL 9002 grey white painted aluminium body / steel mandrel

- corps en aluminium laqué blanc gris RAL 9002 / clou en acier zingué
- RAL 9002 grauweiß lackierter Aluminiumkörper/verzinkter Stahl-Spanndorn
- Cuerpo aluminio / vástago acero. Blanco grisáceo RAL 9002
- тела: окрашенный алюминий RAL 9002 / стержень: сталь



RAL 9002  
Grey white

Item code	Size Ød x l (mm)	Thickness of fixture t <sub>fix</sub> min-max (mm)	Head diameter Ødk (mm)	Drill hole Ødh1 (mm)	Pcs. per box	Pcs. per carton
Ød: 4 mm						
RO 07 40 008	4 x 8	0,5 - 3,5	8	4,1	1.000	10.000
RO 07 40 009	4 x 9,5	3,5 - 5			1.000	10.000
RO 07 40 011	4 x 11	5 - 6,5			1.000	10.000
RO 07 40 012	4 x 12,5	6,5 - 8			1.000	10.000

Technical  
Data Sheet



# YF 02

## Hand riveter (with spring) in steel and PVC handle, with hardened jaws and internal accessories

- 🇫🇷 Outil de pose manuel pour rivets (avec ressort de rappel) réalisée en tôle d'acier, mâchoires et accessoires cimentés
- 🇩🇪 Handnietwerkzeug (mit Rückstellfeder) aus Stahlblech, einsatzgehärtete Spannbacken und Zubehör
- 🇪🇸 Remachadora manual (con muelle de retorno) en fleje de acero plegado, mordazas y accesorios cementados
- 🇷🇺 Заклепочник ручной (с пружинным возвратом) стальной, Усиленные рукоядками и аксессуаров



Length: 255 mm  
Weight: 530 gr

Suitable for rivets:

	Ø 2,4 mm	Ø 3,2 mm	Ø 4,0 mm	Ø 4,8 mm
Aluminum	✓	✓	✓	✓
Steel	✓	✓	✓	-
Stainless Steel	✓	✓	✓	-

Item code	Suitable for rivets: Ø (mm)	Pcs. per box	Pcs. per carton
YF 02 24 048	2,4 - 3 - 3,2 - 3,4 - 4 - 4,8	1	6

Minimum Order Quantity: 1 kit

### 🇫🇷 Spare parts kit for hand riveter YF 02

- 🇫🇷 Assortiment pièces de rechange pour outil de pose pour rivets YF 02
- 🇩🇪 Sortiment Ersatzteile für Handnietwerkzeug YF 02
- 🇪🇸 Surtido de piezas de repuesto para remachadora YF 02
- 🇷🇺 Сортированные запасные части для Заклепочника YF 02

Item code	Kit per bag	Kit per box
YI 07 24 048	1	6

Kit composed by:

- 1 x hardened jaws set
- 1 x hardened spring for jaws
- 4 x nosepieces for Ø 2,4 - 3,2 - 4 - 4,8

# YH 01

## Hand riveter (with spring) in aluminium/steel and PVC handle, with hardened jaws and internal accessories

- 🇫🇷 Outil de pose manuel pour rivets (avec ressort de rappel) réalisée en aluminium/acier, mâchoires et accessoires cimentés
- 🇩🇪 Handnietwerkzeug (mit Rückstellfeder) aus Aluminium/Stahl mit Handgriffen aus PVC, einsatzgehärtete Spannbacken und Zubehör, Schlüssel für Wartung
- 🇪🇸 Remachadora manual (con muelle de retorno) en aluminio/acero, mordazas y accesorios cementados
- 🇷🇺 Ручной заклепочник (с пружинным возвратом) алюминиевой/стальной, Усиленные рукоядками и аксессуаров



Length: 255 mm  
Weight: 520 gr

Suitable for rivets:

	Ø 2,4 mm	Ø 3,2 mm	Ø 4,0 mm	Ø 4,8 mm
Aluminum	✓	✓	✓	✓
Steel	✓	✓	✓	✓
Stainless Steel	✓	✓	✓	✓

Item code	Suitable for rivets: Ø (mm)	Pcs. per box	Pcs. per carton
YH 01 24 048	2,4 - 3 - 3,2 - 3,4 - 4 - 4,8	1	6

Minimum Order Quantity: 1 kit

### 🇫🇷 Spare parts kit for hand riveter YH 01

- 🇫🇷 Assortiment pièces de rechange pour outil de pose pour rivets YH 01
- 🇩🇪 Sortiment Ersatzteile für Handnietwerkzeug YH 01
- 🇪🇸 Surtido de piezas de repuesto para remachadora YH 01
- 🇷🇺 Сортированные запасные части для Заклепочника YH 01

Item code	Kit per bag	Kit per box
YO 07 24 048	1	6

Kit composed by:

- 1 x hardened jaws set
- 1 x hardened spring for jaws
- 4 x nosepieces for Ø 2,4 - 3,2 - 4 - 4,8

# YG 01

## High Performance hand riveter with two arms in steel, with mandrel collector

- Outil de pose manuel pour rivets HAUTES PERFORMANCES avec double bras en acier et récupérateur de clou, mâchoires et accessoires cimentés
- Hochleistungs Handnietwerkzeug mit zwei Armen aus Stahl und Auffangbehälter für Nägel, Spannbacken und einsatzgehärtetes Zubehör
- Remachadora manual ALTAS PRESTACIONES con palancas de acero y colector de vástagos, mordazas y accesorios cementados
- Силовой двуручный стальной заклепочник с контейнером для сбора отработанных сердечников. Усиленные рукоядки и аксессуары



Length: 540 mm  
Weight: 1845 gr

Suitable for rivets:

	∅ 3,2 mm	∅ 4,0 mm	∅ 4,8 mm	∅ 6,0 mm	∅ 6,4 mm
Aluminum	✓	✓	✓	✓	✓
Steel	✓	✓	✓	✓	✓
Stainless Steel	✓	✓	✓	✓	✓

Item code	Suitable for rivets: ∅ (mm)	Pcs. per box	Pcs. per carton
YG 01 30 064	3 - 3,2 - 3,4 - 4 - 4,8 - 6 - 6,4	1	12

Minimum Order Quantity: 1 kit

### Spare parts kit for hand riveter YG 01

- Assortiment pièces de rechange pour outil de pose pour rivets YG 01
- Sortiment Ersatzteile für Handnietwerkzeug YG 01
- Surtido de piezas de repuesto para remachadora YG 01
- Сортированные запасные части для Заклепочника YG 01

Item code	Kit per bag	Kit per box
YJ 10 30 064	1	12

Kit composed by:

- 1 x hardened jaws set
- 1 x pusher for jaws
- 1 x hardened spring
- 5 x nosepieces for ∅ 3,2 - 4 - 4,8 - 6 - 6,4

# YL 01

## High Performance hand riveter, with lattice levers in steel, with hardened jaws and internal accessories

- Outil de pose manuel pour rivets HAUTES PERFORMANCES avec leviers en acier, mâchoires et accessoires cimentés
- Hochleistungs Handnietwerkzeug mit gitterartigem Hebel aus Stahl, Spannbacken und einsatzgehärtetem Zubehör
- Remachadora de fuelle en acero, ALTAS PRESTACIONES, mordazas y accesorios cementados
- Заклепочник профессиональный складной с усиленными рукоядками и аксессуарами



Length: 255 mm  
Weight: 1960 gr

Suitable for rivets:

	∅ 3,2 mm	∅ 4,0 mm	∅ 4,8 mm	∅ 6,0 mm	∅ 6,4 mm
Aluminum	✓	✓	✓	✓	✓
Steel	✓	✓	✓	✓	✓
Stainless Steel	✓	✓	✓	✓	✓

Item code	Suitable for rivets: ∅ (mm)	Pcs. per box	Pcs. per carton
YL 01 30 064	3 - 3,2 - 3,4 - 4 - 4,8 - 6 - 6,4	1	10

\* available on request (quantity and lead time to be agreed)

Minimum Order Quantity: 1 kit

### Spare parts kit for hand riveter YL 01

- Assortiment pièces de rechange pour outil de pose pour rivets YL 01
- Sortiment Ersatzteile für Handnietwerkzeug YL 01
- Surtido de piezas de repuesto para remachadora YL 01
- Сортированные запасные части для Заклепочника YL 01

Item code	Kit per bag	Kit per box
YQ 10 30 064	1	10

Kit composed by:

- 1 x hardened jaws set
- 1 x pusher for jaws
- 1 x hardened spring
- 5 x nosepieces for ∅ 3,2 - 4 - 4,8 - 6 - 6,4

# YT - YTR - YS - YU

**Knurled open cylindrical shank rivet nut, zinc plated**

Embout fileté, corps cylindrique ouvert moleté, en acier zingué

Gewindeeinsatz, zylinderförmiger Körper gerändelt und offen, Stahl verzinkt

Tuerca remachable grafilada, de acero cincado

Резьбовая заклепка-гайка из оцинкованной стали с цилиндрическим фланцем

**YT 01** dome head / tête cylindrique / zylinderkopf / cabeza cilíndrica / полукруглый бортик



Technical Data Sheet



Item code	Size	Thickness of fixture	Head size	Pcs. per box	Pcs. per carton
	M x Ø (hole) x l (mm)	t <sub>fix</sub> min - max (mm)	Ødk x k (mm)		
YT 01 04 010	M4 x 6 x 10	0,3 - 3	9 x 1	500	5.000
YT 01 04 011	M4 x 6 x 11,5	3 - 4	9 x 1	500	5.000
YT 01 05 012	M5 x 7 x 12	0,3 - 3	10 x 1	500	5.000
YT 01 05 015	M5 x 7 x 15	3 - 4	10 x 1	500	5.000
YT 01 06 014	M6 x 9 x 14,5	0,5 - 3	13 x 1,5	250	2.500
YT 01 06 016	M6 x 9 x 16	3 - 4,5	13 x 1,5	250	2.500
YT 01 08 016	M8 x 11 x 16	0,5 - 3	16 x 1,5	200	2.000
YT 01 08 018	M8 x 11 x 18,5	3 - 5,5	16 x 1,5	200	2.000
YT 01 10 017	M10 x 13 x 17	0,5 - 3	19 x 2	200	2.000
YT 01 10 022	M10 x 13 x 22	3 - 6	19 x 2	100	1.000
YT 01 12 023	M12 x 16 x 23	1 - 4	23 x 2	100	1.000

**YTR 01** reduced dome head / Tête cylindrique réduite / reduzierter zylinderkopf / cabeza cilíndrica reducida / полукруглый бортик



Technical Data Sheet



NEW



Item code	Size	Thickness of fixture	Head size	Pcs. per box	Pcs. per carton
	M x Ø (foro) x l (mm)	t <sub>fix</sub> min - max (mm)	Ødk x k (mm)		
YTR 01 12 020	M12 x 15 x 20	1 - 3,5	19 x 1,8	100	1.000

**YS 01** countersunk head / tête fraisée / senkkopf / cabeza avellanada / потайный бортик

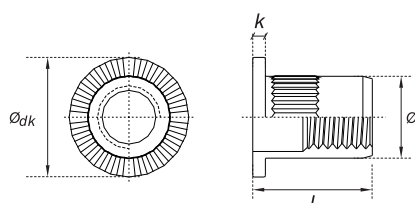


Item code	Size	Thickness of fixture	Head size	Pcs. per box	Pcs. per carton
	M x Ø (hole) x l (mm)	t <sub>fix</sub> min - max (mm)	Ødk x k (mm)		
YS 01 04 011	M4 x 6 x 11,5	1,5 - 3,5	9 x 1,5	500	5.000
YS 01 05 013	M5 x 7 x 13,5	1,5 - 4	10 x 1,5	500	5.000
YS 01 06 016	M6 x 9 x 16	1,5 - 4,5	12 x 1,5	250	2.500
YS 01 08 019	M8 x 11 x 19	2 - 4,5	14 x 1,5	200	2.000
YS 01 10 021	M10 x 13 x 21	2 - 4,5	16 x 1,5	200	2.000

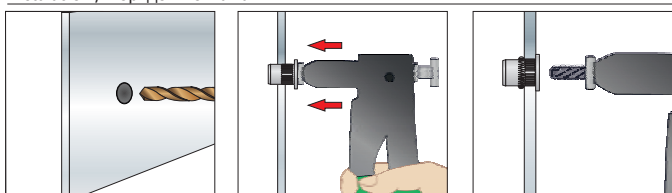
**YU 01** reduced countersunk head / tête réduite / reduzierter senkkopf / cabeza avellanada reducida / малый бортик



Item code	Size	Thickness of fixture	Head size	Pcs. per box	Pcs. per carton
	M x Ø (hole) x l (mm)	t <sub>fix</sub> min - max (mm)	Ødk x k (mm)		
YU 01 04 010	M4 x 6 x 10	0,5 - 3	7 x 0,5	500	5.000
YU 01 05 011	M5 x 7 x 11,5	0,5 - 3	8 x 0,5	500	5.000
YU 01 06 014	M6 x 9 x 14	0,5 - 3	10 x 0,5	500	5.000
YU 01 08 015	M8 x 11 x 15,5	0,5 - 3	12 x 0,5	200	2.000
YU 01 10 019	M10 x 13 x 19,5	1,0 - 3,5	14 x 0,8	200	2.000



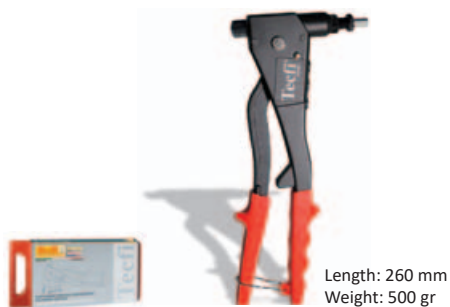
Installation sequence / Instructions de mise en oeuvre / Setzanweisung / Secuencia de instalación / Порядок монтажа



# DK 01

## Professional all materials rivet nuts hand riveter, with hardened internal accessories

- 🇫🇷 Outil de pose manuel professionnelle pour inserts filetés, accessoires cimentés
- 🇩🇪 Professionelles Handnietwerkzeug für Gewindeinsatz, einsatzgehärtetes Zubehör
- 🇪🇸 Remachadora manual profesional para tuercas remachables, accesorios cementados
- 🇷🇺 Профессиональный заклепочный инструмент для резьбовых заклепок, Усиленные аксессуары



Length: 260 mm  
Weight: 500 gr

Item code	Suitable for rivet nuts:	Pcs. per box	Pcs. per carton
DK 01 03 006	M3 - M4 - M5 - M6	1	12

Minimum Order Quantity: 1 kit

### 🇫🇷 Spare parts kit for hand riveter DK 01

- 🇫🇷 Assortiment pièces de rechange pour outil de pose pour rivets DK 01
- 🇩🇪 Sortiment Ersatzteile für Handnietwerkzeug DK 01
- 🇪🇸 Surtido de piezas de repuesto para remachadora DK 01
- 🇷🇺 Сортированные запасные части для Заклепочника DK 01

Item code	Kit per bag	Kit per box
DKR 08 03 006	1	6

#### Kit composed by:

- 4 x screw mandrels (M3-M4-M5-M6)
- 4 x nosepieces (Anvil) for screw mandrels

#### Suitable for rivet nuts:

	M3	M4	M5	M6
Aluminum	✓	✓	✓	✓
Steel	✓	✓	✓	✓
Stainless Steel	✓	✓	✓	✓ Adaptable

# YX 01

## High performance rivet nut hand riveter with 2 levers, with hardened internal accessories

- 🇫🇷 Riveteuse manuelle hautes performances avec double bras pour inserts filetés, accessoires cimentés
- 🇩🇪 Hochleistungs Handnietwerkzeug für Gewindeinsatz mit zwei Armen, einsetzgehärtetem Zubehör
- 🇪🇸 Remachadora manual altas prestaciones para tuercas remachables, con palancas de acero, accesorios cementados
- 🇷🇺 Силовой двуручный ручной стальной заклепочник, Усиленные аксессуары



Item code	Suitable for rivet nuts: M	Pcs. per box	Pcs. per carton
YX 01 05 012	M5 - M6 - M8 - M10 - M12	1	6

### Suitable for rivet nuts:

	M5	M6	M8	M10	M12
Aluminum	✓	✓	✓	✓	✓
Steel	✓	✓	✓	✓	✓
Stainless Steel	✓	✓	✓	✓	✓ Adaptable

# YXR 10

## Spare parts SET (5 sizes - 10 pieces), for YX 01 hand riveter

- 🇫🇷 Jeu de pièces de rechange (5 dimensions différentes -10 pcs) pour riveteuse YX01
- 🇩🇪 Ersatzteil-SET (5 Größen - 10 Stück), für Handnietmaschine YX 01
- 🇪🇸 Surtido de piezas de repuesto (5 vástagos roscados – 5 boquillas), para remachadora YX 01
- 🇷🇺 Набор запасные части (5 разм. - 10 шт) для Заклепочника YX 01



Item code	Suitable for rivet nuts:	Pcs. per box (kit)	Pcs. per carton (kit)
YXR 10 05 012	M5 - M6 - M8 - M10 - M12	1	6

### Kit composed by:

- 5 x screw mandrels
- 5 x nosepieces (Anvil) for screw mandrels

Box / Boîte / Verpackung / Caja / Упаковка



# YXR 02 <sup>NEW</sup>

## Spare parts SET (1 size - 2 pieces), for YX 01 hand riveter

- 🇫🇷 Jeu de pièces de rechange (1 longueur - 2 pièces) pour riveteuse manuelle YX01
- 🇩🇪 Ersatzteil-SET (1 Größe - 2 Stück), für Handnietmaschine YX 01
- 🇪🇸 Surtido de piezas de repuesto (1 vástago roscado – 1 boquilla), para remachadora YX 01
- 🇷🇺 Набор запасные части (1 разм. - 2 шт) для Заклепочника YX 01



Item code	Suitable for rivet nuts:	Pcs. per box (kit)	Pcs. per carton (kit)
YXR 02 00 005	M5	1	6
YXR 02 00 006	M6	1	6
YXR 02 00 008	M8	1	6
YXR 02 00 010	M10	1	6
YXR 02 00 012	M12	1	6

### Kit composed by:

- 1 x screw mandrels
- 1 x nosepieces (Anvil) for screw mandrels

Box / Boîte / Verpackung / Caja / Упаковка

