
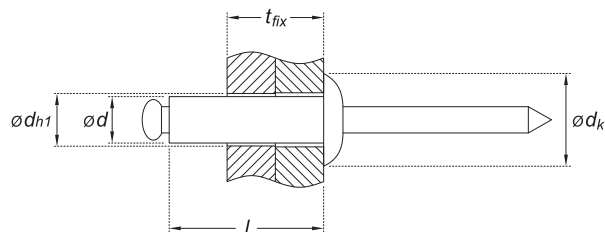


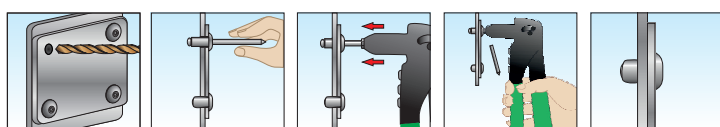
RC 00 Rivetto a strappo in Acciaio INOX A2 (AISI304), testa bombata, con mandrino in acciaio inox 



SCHEDA TECNICA



$\varnothing d \times l$	diametro corpo rivetto x lunghezza corpo rivetto
t_{fix}	spessore serraggio (massimo fissabile)
$\varnothing d_k$	diametro testa
$\varnothing d_{h1}$	diametro del foro
$ct_{a_{min}}$	minimo carico di taglio
ctr_{min}	minimo carico di trazione



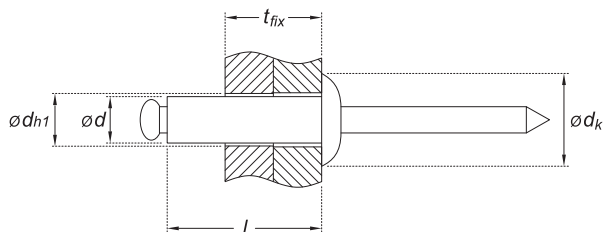
DATI TECNICI E RISULTATI DI PROVA SU ANCORANTI **RC 00**

Codice Articolo	Misura $\varnothing d \times l$ (mm)	t_{fix} min - max (mm)	$\varnothing d_k$ (mm)	$\varnothing d_{h1}$ (mm)	$ct_{a_{min}}$ (N)	ctr_{min} (N)
Ød 3 mm						
RC 00 30 006	3 x 6	0,5 - 3	6,0	3,1	1.800	2.200
RC 00 30 008	3 x 8	3 - 5				
RC 00 30 010	3 x 10	5 - 6,5				
RC 00 30 012	3 x 12	6,5 - 8,5				
Ød 3,2 mm						
RC 00 32 006	3,2 x 6	0,5 - 3	6,5	3,3	1.900	2.500
RC 00 32 008	3,2 x 8	3 - 5				
RC 00 32 010	3,2 x 10	5 - 6,5				
RC 00 32 012	3,2 x 12	6,5 - 8,5				
Ød 4 mm						
RC 00 40 006	4 x 6	1 - 2,5	8,0	4,1	2.700	3.500
RC 00 40 008	4 x 8	2,5 - 4,5				
RC 00 40 010	4 x 10	4,5 - 6,5				
RC 00 40 012	4 x 12	6,5 - 8,5				
RC 00 40 014	4 x 14	8,5 - 10				
RC 00 40 016	4 x 16	10 - 12				
Ød 4,8 mm						
RC 00 48 008	4,8 x 8	2 - 4	9,5	5,0	4.000	5.000
RC 00 48 010	4,8 x 10	4 - 6				
RC 00 48 012	4,8 x 12	6 - 8				
RC 00 48 016	4,8 x 16	8 - 11				
RC 00 48 018	4,8 x 18	11 - 13				
RC 00 48 020	4,8 x 20	13 - 16				
RC 00 48 025	4,8 x 25	16 - 19				
RC 00 48 030	4,8 x 30	19 - 24				

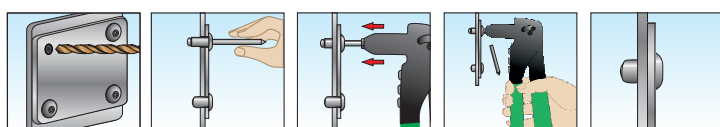
RC 00 A2 (AISI 304) S/S open end blind rivet, dome head, with stainless steel break pull mandrel



TECHNICAL DATA SHEET



$\varnothing d \times l$	diameter x length
t_{fix}	thickness of fixture
$\varnothing d_k$	head
$\varnothing d_{h1}$	hole diameter
$ct_{a_{min}}$	minimum shear load
ctr_{min}	minimum tensile load



TECHNICAL DATA AND TEST REPORT ON RC 00

Item Code	Size $\varnothing d \times l$ (mm)	t_{fix} min - max (mm)	$\varnothing d_k$ (mm)	$\varnothing d_{h1}$ (mm)	$ct_{a_{min}}$ (N)	ctr_{min} (N)
$\varnothing d$ 3 mm						
RC 00 30 006	3 x 6	0,5 - 3	6,0	3,1	1.800	2.200
RC 00 30 008	3 x 8	3 - 5				
RC 00 30 010	3 x 10	5 - 6,5				
RC 00 30 012	3 x 12	6,5 - 8,5				
$\varnothing d$ 3,2 mm						
RC 00 32 006	3,2 x 6	0,5 - 3	6,5	3,3	1.900	2.500
RC 00 32 008	3,2 x 8	3 - 5				
RC 00 32 010	3,2 x 10	5 - 6,5				
RC 00 32 012	3,2 x 12	6,5 - 8,5				
$\varnothing d$ 4 mm						
RC 00 40 006	4 x 6	1 - 2,5	8,0	4,1	2.700	3.500
RC 00 40 008	4 x 8	2,5 - 4,5				
RC 00 40 010	4 x 10	4,5 - 6,5				
RC 00 40 012	4 x 12	6,5 - 8,5				
RC 00 40 014	4 x 14	8,5 - 10				
RC 00 40 016	4 x 16	10 - 12				
$\varnothing d$ 4,8 mm						
RC 00 48 008	4,8 x 8	2 - 4	9,5	5,0	4.000	5.000
RC 00 48 010	4,8 x 10	4 - 6				
RC 00 48 012	4,8 x 12	6 - 8				
RC 00 48 016	4,8 x 16	8 - 11				
RC 00 48 018	4,8 x 18	11 - 13				
RC 00 48 020	4,8 x 20	13 - 16				
RC 00 48 025	4,8 x 25	16 - 19				
RC 00 48 030	4,8 x 30	19 - 24				