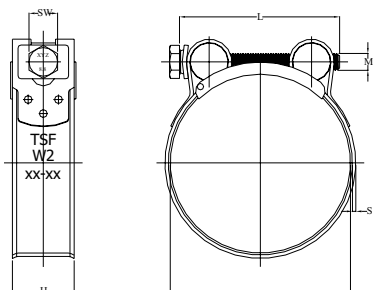


XK **DIN 3017-3-C1-2 (W2)** - Fascetta metallica stringitubo e ponte in acciaio INOX (AISI 430), con vite testa esagonale di classe 8.8 e dado cilindrico in acciaio zincato

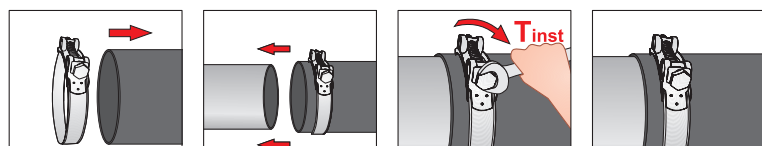
W2



SCHEDA TECNICA



\varnothing	diametro tubo
S	spessore banda
b	larghezza banda
M/Ch	misura vite
T _{inst}	coppia di serraggio consigliata
T _{max}	coppia di serraggio massima



SCHEDA TECNICA XK

Codice Articolo	\varnothing (mm)	b (mm)	S (mm)	M/Ch (mm)	T _{inst} (Nm)	T _{max} (Nm)
XK 00 17 019	17 ÷ 19	18	0,60	M5 / 8	4	8
XK 00 20 022	20 ÷ 22	18	0,60	M5 / 8	4	8
XK 00 23 025	23 ÷ 25	18	0,80	M6 / 10	7	10
XK 00 26 028	26 ÷ 28	18	0,80	M6 / 10	7	10
XK 00 29 031	29 ÷ 31	20	0,80	M6 / 10	7	10
XK 00 32 035	32 ÷ 35	20	0,80	M6 / 10	7	10
XK 00 36 039	36 ÷ 39	20	0,80	M6 / 10	7	10
XK 00 40 043	40 ÷ 43	20	0,80	M6 / 10	7	10
XK 00 44 047	44 ÷ 47	22	1,20	M8 / 13	12	20
XK 00 48 051	48 ÷ 51	22	1,20	M8 / 13	12	20
XK 00 52 055	52 ÷ 55	22	1,20	M8 / 13	12	20
XK 00 56 059	56 ÷ 59	22	1,20	M8 / 13	12	20
XK 00 60 063	60 ÷ 63	22	1,20	M8 / 13	12	20
XK 00 64 067	64 ÷ 67	22	1,20	M8 / 13	12	20
XK 00 68 073	68 ÷ 73	24	1,20	M8 / 13	12	20
XK 00 74 079	74 ÷ 79	24	1,20	M8 / 13	12	20
XK 00 80 085	80 ÷ 85	24	1,20	M8 / 13	12	20
XK 00 86 091	86 ÷ 91	24	1,20	M8 / 13	12	20
XK 00 92 097	92 ÷ 97	24	1,20	M8 / 13	12	20
XK 00 98 103	98 ÷ 103	24	1,20	M8 / 13	12	20
XK 01 04 112	104 ÷ 112	24	1,20	M8 / 13	12	20
XK 01 13 121	113 ÷ 121	24	1,20	M8 / 13	12	20
XK 01 22 130	122 ÷ 130	24	1,20	M8 / 13	12	20
XK 01 31 139	131 ÷ 139	26	1,50	M10 / 17	30	45
XK 01 40 148	140 ÷ 148	26	1,50	M10 / 17	30	45
XK 01 49 161	149 ÷ 161	26	1,50	M10 / 17	30	45
XK 01 62 174	162 ÷ 174	26	1,50	M10 / 17	30	45
XK 01 75 187	175 ÷ 187	26	1,50	M10 / 17	30	45
XK 01 88 200	188 ÷ 200	26	1,50	M10 / 17	30	45
XK 02 01 213	201 ÷ 213	26	1,50	M10 / 17	30	45
XK 02 14 226	214 ÷ 226	26	1,50	M10 / 17	30	45
XK 02 27 239	227 ÷ 239	26	1,50	M10 / 17	30	45
XK 02 40 252	240 ÷ 252	26	1,50	M10 / 17	30	45

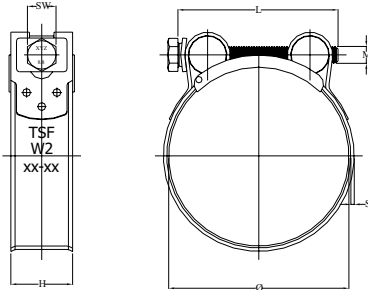
XK

DIN 3017-3-C1-2 (W2) - AISI 430 (or equivalent corrosion-resistant) stainless steel hose clamp with DIN 933 hex head zinc plated steel screw 8.8 grade and cylinder nut

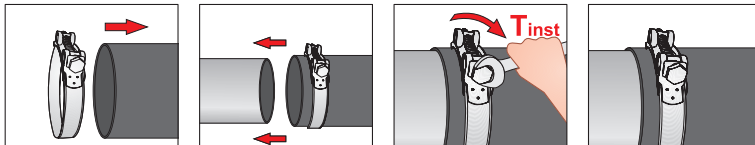
W2



TECHNICAL DATA SHEET



\varnothing	tube diameter
S	band thickness
b	band width
M/AF	screw size
T _{inst}	recommended tightening torque
T _{max}	maximum tightening torque



TECHNICAL DATA XK

Item Code	\varnothing (mm)	b (mm)	S (mm)	M/Ch (mm)	T _{inst} (Nm)	T _{max} (Nm)
XK 00 17 019	17 ÷ 19	18	0,60	M5 / 8	4	8
XK 00 20 022	20 ÷ 22	18	0,60	M5 / 8	4	8
XK 00 23 025	23 ÷ 25	18	0,80	M6 / 10	7	10
XK 00 26 028	26 ÷ 28	18	0,80	M6 / 10	7	10
XK 00 29 031	29 ÷ 31	20	0,80	M6 / 10	7	10
XK 00 32 035	32 ÷ 35	20	0,80	M6 / 10	7	10
XK 00 36 039	36 ÷ 39	20	0,80	M6 / 10	7	10
XK 00 40 043	40 ÷ 43	20	0,80	M6 / 10	7	10
XK 00 44 047	44 ÷ 47	22	1,20	M8 / 13	12	20
XK 00 48 051	48 ÷ 51	22	1,20	M8 / 13	12	20
XK 00 52 055	52 ÷ 55	22	1,20	M8 / 13	12	20
XK 00 56 059	56 ÷ 59	22	1,20	M8 / 13	12	20
XK 00 60 063	60 ÷ 63	22	1,20	M8 / 13	12	20
XK 00 64 067	64 ÷ 67	22	1,20	M8 / 13	12	20
XK 00 68 073	68 ÷ 73	24	1,20	M8 / 13	12	20
XK 00 74 079	74 ÷ 79	24	1,20	M8 / 13	12	20
XK 00 80 085	80 ÷ 85	24	1,20	M8 / 13	12	20
XK 00 86 091	86 ÷ 91	24	1,20	M8 / 13	12	20
XK 00 92 097	92 ÷ 97	24	1,20	M8 / 13	12	20
XK 00 98 103	98 ÷ 103	24	1,20	M8 / 13	12	20
XK 01 04 112	104 ÷ 112	24	1,20	M8 / 13	12	20
XK 01 13 121	113 ÷ 121	24	1,20	M8 / 13	12	20
XK 01 22 130	122 ÷ 130	24	1,20	M8 / 13	12	20
XK 01 31 139	131 ÷ 139	26	1,50	M10 / 17	30	45
XK 01 40 148	140 ÷ 148	26	1,50	M10 / 17	30	45
XK 01 49 161	149 ÷ 161	26	1,50	M10 / 17	30	45
XK 01 62 174	162 ÷ 174	26	1,50	M10 / 17	30	45
XK 01 75 187	175 ÷ 187	26	1,50	M10 / 17	30	45
XK 01 88 200	188 ÷ 200	26	1,50	M10 / 17	30	45
XK 02 01 213	201 ÷ 213	26	1,50	M10 / 17	30	45
XK 02 14 226	214 ÷ 226	26	1,50	M10 / 17	30	45
XK 02 27 239	227 ÷ 239	26	1,50	M10 / 17	30	45
XK 02 40 252	240 ÷ 252	26	1,50	M10 / 17	30	45