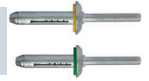
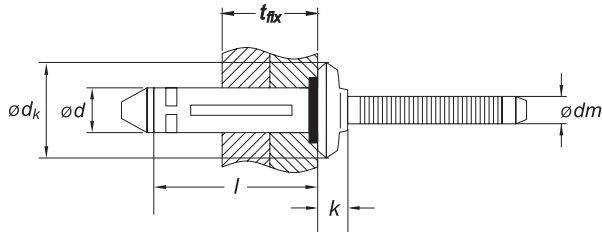


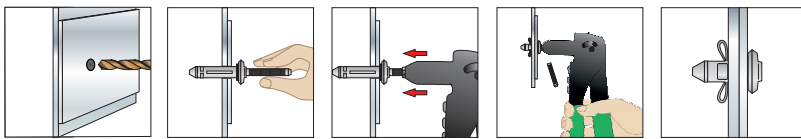
XUL 00 Rivetto a strappo ad estremità aperta in alluminio (Mg 5%), testa bombata LARGA, con guarnizione, con mandrino (chiodo) in alluminio



SCHEDA TECNICA



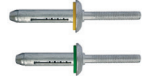
$\varnothing d \times l$	diametro corpo rivetto x lunghezza corpo rivetto
t_{fix}	spessore serraggio (massimo fissabile)
$\varnothing d_k$	diametro testa
$\varnothing d_{h1}$	diametro del foro
ctr_{min}	minimo carico di trazione
cta_{min}	minimo carico a taglio



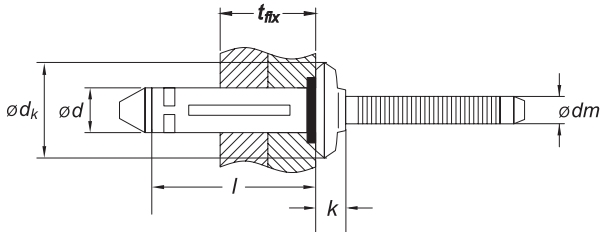
SCHEDA TECNICA XUL 00

Codice Articolo	Misura $\varnothing d \times l$ (mm)	t_{fix} min - max (mm)	$\varnothing d_k$ (mm)	$\varnothing d_{h1}$ (mm)	ctr_{min} (N)	cta_{min} (N)
$\varnothing d$ 7,7 mm						
XUL 00 77 028	7,7 x 28	1,9 - 9,5	19	8	5.350	2.601
XUL 00 77 034	7,7 x 34	6,4 - 15,9				

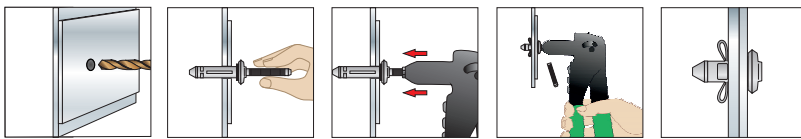
XUL 00 Aluminium alloy (Mg 5%) open end blind folding rivet with gasket, large dome head, with aluminium break pull mandrel



TECHNICAL DATA SHEET



$\varnothing d \times l$	diameter x length
t_{fix}	thickness of fixture
$\varnothing d_k$	head
$\varnothing d_{h1}$	hole diameter
ctr_{min}	minimum tensile load
cta_{min}	minimum shear load



TECHNICAL DATA SHEET OF XUL 00

Item Code	Size $\varnothing d \times l$ (mm)	t_{fix} min - max (mm)	$\varnothing d_k$ (mm)	$\varnothing d_{h1}$ (mm)	ctr_{min} (N)	cta_{min} (N)
$\varnothing d$ 7,7 mm						
XUL 00 77 028	7,7 x 28	1,9 - 9,5	19	8	5.350	2.601
XUL 00 77 034	7,7 x 34	6,4 - 15,9				