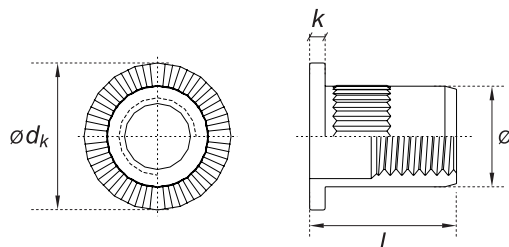


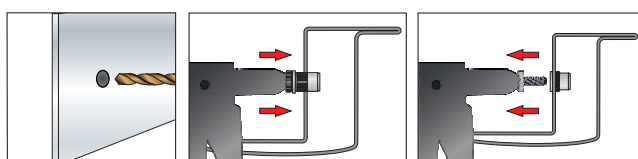
YT - YS - YU Inserto filettato con testa cilindrica, corpo cilindrico aperto zigrinato, in acciaio zincato



SCHEDA TECNICA



l	lunghezza
Ø	diametro foro
k	spessore testa
Ø_{dk}	diametro testa
T_{fix}	spessore serrabile
s	spessore supporto
N	Resistenza caratteristica all'estrazione



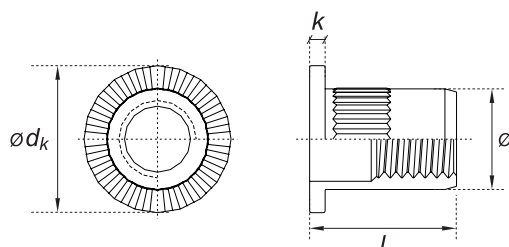
SCHEDA TECNICA YT 01 - YS 01 - YU 01

Codice Articolo	Misura M x l (mm)	Ø (foro) (mm)	Ø _{dk} (mm)	k (mm)	T _{fix} min - max (mm)	s (mm)	N (kN)
YT 01 04 010 YU 01 04 010	M4 x 10	6	8,50	0,90	0,3 - 3	1	1,50
						2	4
						3	5
YT 01 04 011 YS 01 04 011	M4 x 11,5	6	8,50	0,90	3 - 4	3	4,8
						4	2,40
						1	2,40
YU 01 05 011	M5 x 11,5	7	8	0,50	0,5 - 3	2	5,90
						3	3,40
						1	2,40
YT 01 05 012	M5 x 12	7	9,50	0,90	0,3 - 3	2	5,90
						3	3,40
						1	2,40
YS 01 05 013	M5 x 13,5	7	10	1,50	1,5 - 4	2	5,90
						3	3,40
						1	2,40
YT 01 05 015	M5 x 15	7	9,50	0,90	3 - 4	3	3,70
						4	
						1	2,30
YT 01 06 014 YU 01 06 014	M6 x 14,5	9	12,50	1,40	0,5 - 3	2	6,30
						3	
						1	2,30
YT 01 06 016 YS 01 06 016	M6 x 16	9	12,50	1,40	3 - 4,5	3	11,20
						4	
						1	1,40
YU 01 08 015	M8 x 15,5	11	12	0,50	0,5 - 3	2	7,90
						3	17,80
						1	1,40
YT 01 08 016	M8 x 16	11	15,50	1,40	0,5 - 3	2	7,90
						3	17,80
						1	1,40
YT 01 08 018	M8 x 18,5	11	15,50	1,40	3 - 5,5	3	14,90
						4	20,70
						5	27,80
YS 01 08 019	M8 x 19	11	14	1,50	2 - 4,5	3	14,90
						4	20,70
						5	27,80
YT 01 10 017	M10 x 17	13	18,50	1,9	0,5 - 3	1,0	5,50
						1,5	10
						3	18,50
YU 01 10 019	M10 x 19,5	13	14	0,80	1 - 3,5	1,0	5,50
						1,5	10
						3	18,50
YS 01 10 021	M10 x 21	13	16	1,50	2 - 4,5	3	18,50
						4	
						5	22,60
YT 01 10 022	M10 x 22	13	18,50	1,90	3 - 6	6	
						3	18,50
						4	
YT 01 12 023	M12 x 23	16	22,50	1,90	1 - 4	5	22,60
						6	
						3	18,50
						1	4
						2	16,30
						3	16,30
						4	30,70

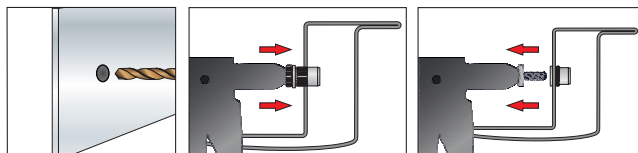
YTR 01 Inserto filettato con testa cilindrica ridotta, corpo cilindrico aperto zigrinato, in acciaio zincato



SCHEDA TECNICA



l	lunghezza
Ø	diametro foro
k	spessore testa
Ø_{dk}	diametro testa
T_{fix}	spessore serrabile
s	spessore supporto
N	Resistenza caratteristica all'estrazione



YTR

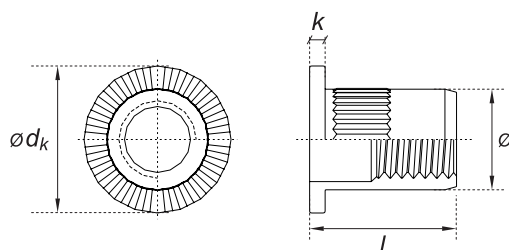
SCHEDA TECNICA YTR 01

Codice Articolo	Misura <i>M x l (mm)</i>	Ø (foro) (mm)	Ø _{dk} (mm)	k (mm)	T _{fix} <i>min - max (mm)</i>	s (mm)	N (kN)
YTR 01 12 020	M12 x 20	15	19	1,8	1 - 3,5	1,0	7,5
						1,5	9,0
						3,5	25,0

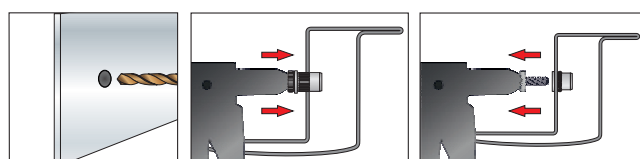
YT - YS - YU Dome head knurled open cylindrical shank rivet nut, zinc plated



TECHNICAL DATA SHEET



l	length
Ø	hole diameter
k	head thickness
Ø_{dk}	head diameter
T_{fix}	thickness of fixture
s	thickness of the member
N	Characteristic tensile resistance



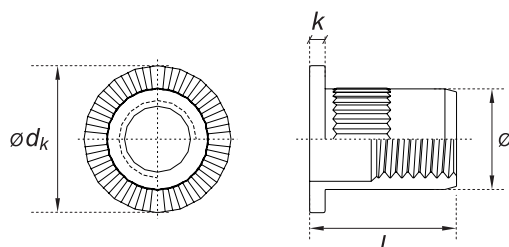
TECHNICAL DATA SHEET OF YT 01 - YS 01 - YU 01

Item Code	Size <i>M x l (mm)</i>	Ø (foro) <i>(mm)</i>	Ø _{dk} <i>(mm)</i>	k <i>(mm)</i>	T _{fix} <i>min - max (mm)</i>	s <i>(mm)</i>	N <i>(kN)</i>
YT 01 04 010 YU 01 04 010	M4 x 10	6	8,50	0,90	0,3 - 3	1	1,50
						2	4
						3	5
YT 01 04 011 YS 01 04 011	M4 x 11,5	6	8,50	0,90	3 - 4	3	4,8
						4	2,40
						1	2,40
YU 01 05 011	M5 x 11,5	7	8	0,50	0,5 - 3	2	5,90
						3	3,40
						1	2,40
YT 01 05 012	M5 x 12	7	9,50	0,90	0,3 - 3	2	5,90
						3	3,40
						1	2,40
YS 01 05 013	M5 x 13,5	7	10	1,50	1,5 - 4	2	5,90
						3	3,40
						1	2,40
YT 01 05 015	M5 x 15	7	9,50	0,90	3 - 4	3	3,70
						4	
						1	2,30
YT 01 06 014 YU 01 06 014	M6 x 14,5	9	12,50	1,40	0,5 - 3	2	6,30
						3	
						1	2,30
YT 01 06 016 YS 01 06 016	M6 x 16	9	12,50	1,40	3 - 4,5	3	11,20
						4	
						1	1,40
YU 01 08 015	M8 x 15,5	11	12	0,50	0,5 - 3	2	7,90
						3	17,80
						1	1,40
YT 01 08 016	M8 x 16	11	15,50	1,40	0,5 - 3	2	7,90
						3	17,80
						1	1,40
YT 01 08 018	M8 x 18,5	11	15,50	1,40	3 - 5,5	3	14,90
						4	20,70
						5	27,80
YS 01 08 019	M8 x 19	11	14	1,50	2 - 4,5	3	14,90
						4	20,70
						5	27,80
YT 01 10 017	M10 x 17	13	18,50	1,9	0,5 - 3	1,0	5,50
						1,5	10
						3	18,50
YU 01 10 019	M10 x 19,5	13	14	0,80	1 - 3,5	1,0	5,50
						1,5	10
						3	18,50
YS 01 10 021	M10 x 21	13	16	1,50	2 - 4,5	3	18,50
						4	
						5	22,60
YT 01 10 022	M10 x 22	13	18,50	1,90	3 - 6	6	
						3	18,50
						4	
YT 01 12 023	M12 x 23	16	22,50	1,90	1 - 4	5	22,60
						6	
						3	18,50
						1	4
						2	16,30
						3	16,30
						4	30,70

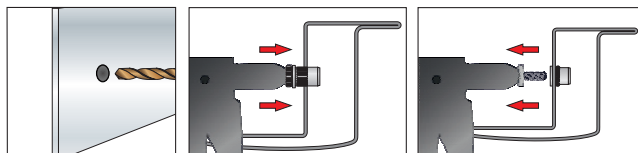
YTR 01 Knurled open cylindrical shank steel rivet nut with reduced Dome Head, zinc plated



TECHNICAL DATA SHEET



l	length
\emptyset	hole diameter
k	head thickness
\emptyset_{dk}	head diameter
T_{fix}	thickness of fixture
s	thickness of the member
N	Characteristic tensile resistance



YTR

TECHNICAL DATA SHEET OF YTR 01

Item Code	Size <i>M x l (mm)</i>	Ø (foro) <i>(mm)</i>	Ø _{dk} <i>(mm)</i>	k <i>(mm)</i>	T _{fix} <i>min - max (mm)</i>	s <i>(mm)</i>	N <i>(kN)</i>
YTR 01 12 020	M12 x 20	15	19	1,8	1 - 3,5	1,0	7,5
						1,5	9,0
						3,5	25,0