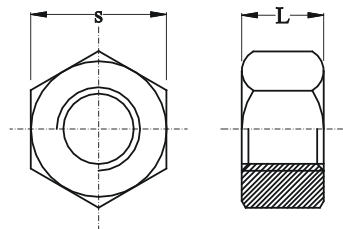


QT 01 ISO 4032 - Dado esagonale di classe 8, in acciaio zincato



SCHEDA TECNICA



M	diametro nominale di filettatura
h	altezza del dado
R_m	resistenza a trazione
s	larghezza in chiave
A_{s,nom}	area resistente nominale
F_{m,min}	minimo carico di rottura a trazione

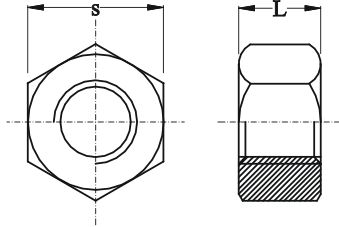
SCHEDA TECNICA **QT 01**

Codice Articolo	M (mm)	h (mm)	s (mm)	R _m (MPa)	A _{s,nom} (mm ²)	F _{m,min} (kN)
QT 01 00 006	6	5	10	855	20,1	17
QT 01 00 008	8	6,5	13	870	36,6	32
QT 01 00 010	10	8	17		58	50
QT 01 00 012	12	10	19	880	84,3	74
QT 01 00 014	14	11	22		115	101
QT 01 00 016	16	13	24	920	157	126
QT 01 00 018	18	15,5	27		192	177
QT 01 00 020	20	17	30		245	225
QT 01 00 022	22	19	32		303	279
QT 01 00 024	24	21	36		353	325
QT 01 00 027	27	23	41		459	422
QT 01 00 030	30	25	46		561	516
QT 01 00 033	33	28	50		694	638
QT 01 00 036	36	30	55		817	752
QT 01 00 039	39	32	60		976	898

QT 01 ISO 7032 - Steel hexagonal nut, property class 8, zinc plated



TECHNICAL DATA SHEET



M	diameter of the metric thread
h	nut height
R_m	tensile strength
s	wrench size
A_{s,nom}	nominal stress area
F_{m,min}	minimum tensile load

TECHNICAL DATA SHEET **QT 01**

Item Code	M (mm)	h (mm)	s (mm)	R _m (MPa)	A _{s,nom} (mm ²)	F _{m,min} (kN)
QT 01 00 006	6	5	10	855	20,1	17
QT 01 00 008	8	6,5	13	870	36,6	32
QT 01 00 010	10	8	17		58	50
QT 01 00 012	12	10	19	880	84,3	74
QT 01 00 014	14	11	22		115	101
QT 01 00 016	16	13	24		157	126
QT 01 00 018	18	15,5	27	920	192	177
QT 01 00 020	20	17	30		245	225
QT 01 00 022	22	19	32		303	279
QT 01 00 024	24	21	36		353	325
QT 01 00 027	27	23	41		459	422
QT 01 00 030	30	25	46		561	516
QT 01 00 033	33	28	50		694	638
QT 01 00 036	36	30	55	817	752	
QT 01 00 039	39	32	60	976	898	