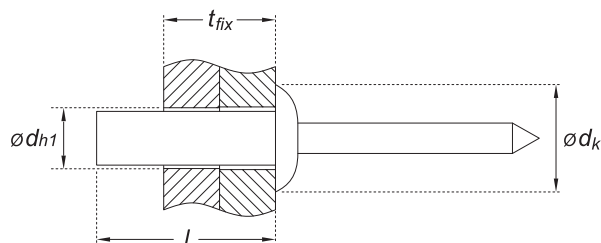


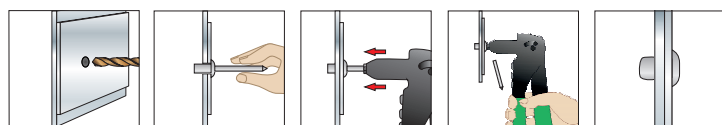
RO Rivetto a strappo ad estremità chiusa in alluminio, testa bombata, con mandrino in acciaio



SCHEDA TECNICA



$\varnothing d \times l$	diametro corpo rivetto x lunghezza corpo rivetto
t_{fix}	spessore serraggio (massimo fissabile)
$\varnothing d_k$	diametro testa
$\varnothing d_{h1}$	diametro del foro
$ct_{a_{min}}$	minimo carico di taglio
$ct_{r_{min}}$	minimo carico di trazione



DATI TECNICI E RISULTATI DI PROVA SU ANCORANTI **RO**

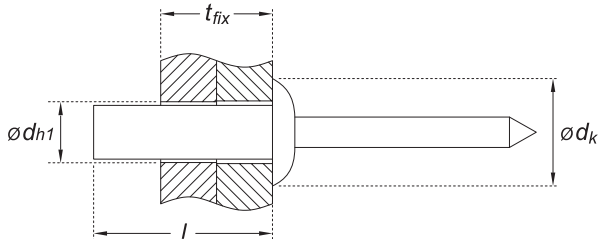
Codice Articolo	Misura $\varnothing d \times l$ (mm)	t_{fix} min - max (mm)	$\varnothing d_k$ (mm)	$\varnothing d_{h1}$ (mm)	$ct_{a_{min}}$ (N)	$ct_{r_{min}}$ (N)
$\varnothing d$ 4 mm - $\varnothing dk$ 10 mm						
RO xx 40 008	4 x 8	0,5 - 3,5	8	4,1	1.600	2.200
RO xx 40 009	4 x 9,5	3,5 - 5				
RO xx 40 011	4 x 11	5 - 6,5				
RO xx 40 012	4 x 12,5	6,5 - 8				

ROxx = RO00 - corpo alluminio naturale / mandrino acciaio
 RO04 - corpo alluminio verniciato RAL 8004 / mandrino acciaio verniciato RAL 8004
 RO07 - corpo alluminio verniciato RAL 9002 / mandrino acciaio verniciato RAL 9002

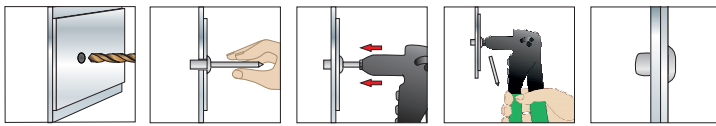
RO Closed end dome head aluminium alloy blind rivet, with steel mandrel



TECHNICAL DATA SHEET



$\varnothing d \times l$	diameter x length
t_{fix}	thickness of fixture
$\varnothing d_k$	head
$\varnothing d_{h1}$	hole diameter
$ct_{a_{min}}$	minimum shear load
$ct_{r_{min}}$	minimum tensile load



TECHNICAL DATA AND TEST REPORT ON **RO**

Item Code	Size $\varnothing d \times l$ (mm)	t_{fix} min - max (mm)	$\varnothing d_k$ (mm)	$\varnothing d_{h1}$ (mm)	$ct_{a_{min}}$ (N)	$ct_{r_{min}}$ (N)
$\varnothing d$ 4 mm - $\varnothing dk$ 10 mm						
RO xx 40 008	4 x 8	0,5 - 3,5	8	4,1	1.600	2.200
RO xx 40 009	4 x 9,5	3,5 - 5				
RO xx 40 011	4 x 11	5 - 6,5				
RO xx 40 012	4 x 12,5	6,5 - 8				

ROxx = RO00 - aluminium alloy body / zinc plated steel mandrel

RO04 - painted steel body RAL 8004 / painted steel mandrel RAL 8004

RO07 - painted steel body RAL 9002 / painted steel mandrel RAL 9002